



Single Family
Hazel

Available in 2 Communities



Call for Price

1 Elevations Available

2 Bedrooms

2 Bathrooms

1,944+ Sq. Ft.

2 Car Garage

This beautiful one-story home features 2 bedrooms and 2 full baths with a study to the front of the home. The kitchen, offering plenty of counter space and storage, opens to a great room with the option for a fireplace. The private owner's suite boasts a bedroom with optional tray ceiling, bathroom, and an oversized closet. Additional 2nd floor options include a loft space or a 3rd bedroom and bath with a loft.

Available Elevations

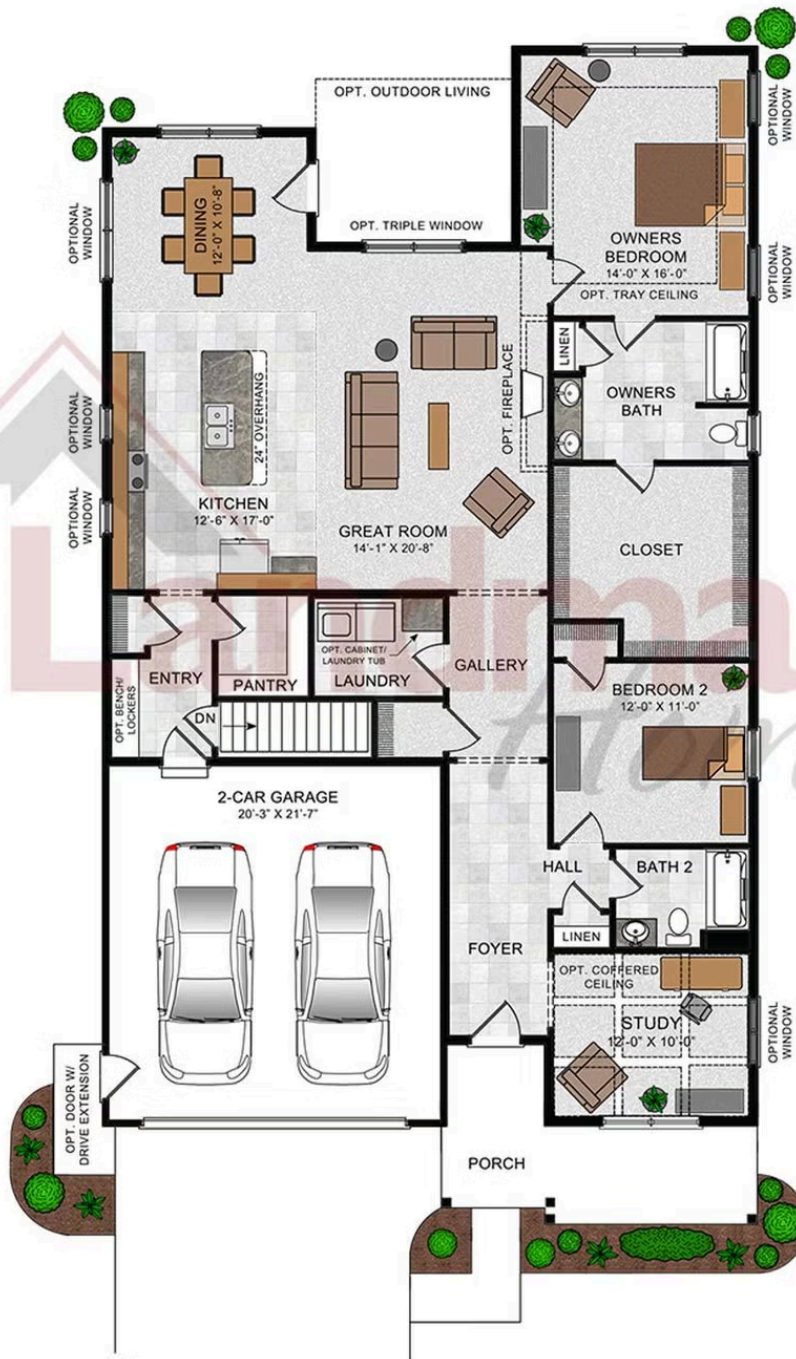


Upgraded C Trademark

Document generated 4/24/26

© 2026 Landmark Builders, Inc. We enforce our intellectual property rights to the fullest extent permitted by applicable law. Elevations and landscaping are artists' conceptions only. Actual construction documents take precedence over artwork. Similar photos shown are for representative purposes only. Details subject to

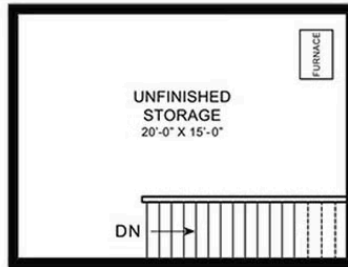




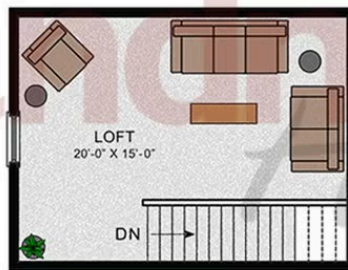
© 2022 Landmark Builders, Inc. We enforce our intellectual property rights to the fullest extent permitted by applicable law. Elevations and landscaping are artists' conceptions only. Floor plans may vary depending on elevation selected. Actual construction documents take precedence over artwork.

© 2026 Landmark Builders, Inc. We enforce our intellectual property rights to the fullest extent permitted by applicable law. Elevations and landscaping are artists' conceptions only. Actual construction documents take precedence over artwork. Similar photos shown are for representative purposes only. Details subject to change without notification. See Community Sales Manager for details.

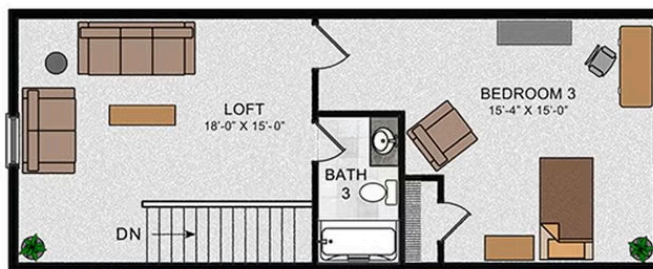
OPTIONAL SECOND FLOOR PLAN
W/ UNFINISHED STORAGE



OPT. SECOND FLOOR PLAN W/ LOFT



OPTIONAL SECOND FLOOR PLAN
W/ LOFT, BEDROOM 3, AND BATH 3



© 2022 Landmark Builders, Inc. We enforce our intellectual property rights to the fullest extent permitted by applicable law. Elevations and landscaping are artists' conceptions only. Floor plans may vary depending on elevation selected. Actual construction documents take precedence over artwork.

© 2026 Landmark Builders, Inc. We enforce our intellectual property rights to the fullest extent permitted by applicable law. Elevations and landscaping are artists' conceptions only. Actual construction documents take precedence over artwork. Similar photos shown are for representative purposes only. Details subject to change without notification. See Community Sales Manager for details.

Available Communities



55+ Community

Winding Creek 55+ Living

1 Grand Summit Dr
Annville, PA 17003

Near Hershey, PA

Single Family Homes, Duplexes
Starting at

\$424,100

2-3 Bed 2-3 Bath 1672+ Ft²



Freedom Square

Copenhaffer Rd
York, PA 17404

New Homes Coming Soon to
Conewago Township

Single Family Homes Starting at

\$394,900

2-5 Bed 2-3 Bath 1647+ Ft²