



Single Family  
**Hartford**

Available in 1 Community



# Call for Price

2 Elevations Available

2 Bedrooms

2 Bathrooms

1,507+ Sq. Ft.

2 Car Garage

Convenient single-story living with the option to include a storage area on the second floor. The kitchen, family room, and dining room are the central point of the home, and share open spaces and plenty of windows for lots of natural light. The owner's suite is situated down its own hallway and includes an expansive closet and private bath.

## Available Elevations



Upgraded B Transitional

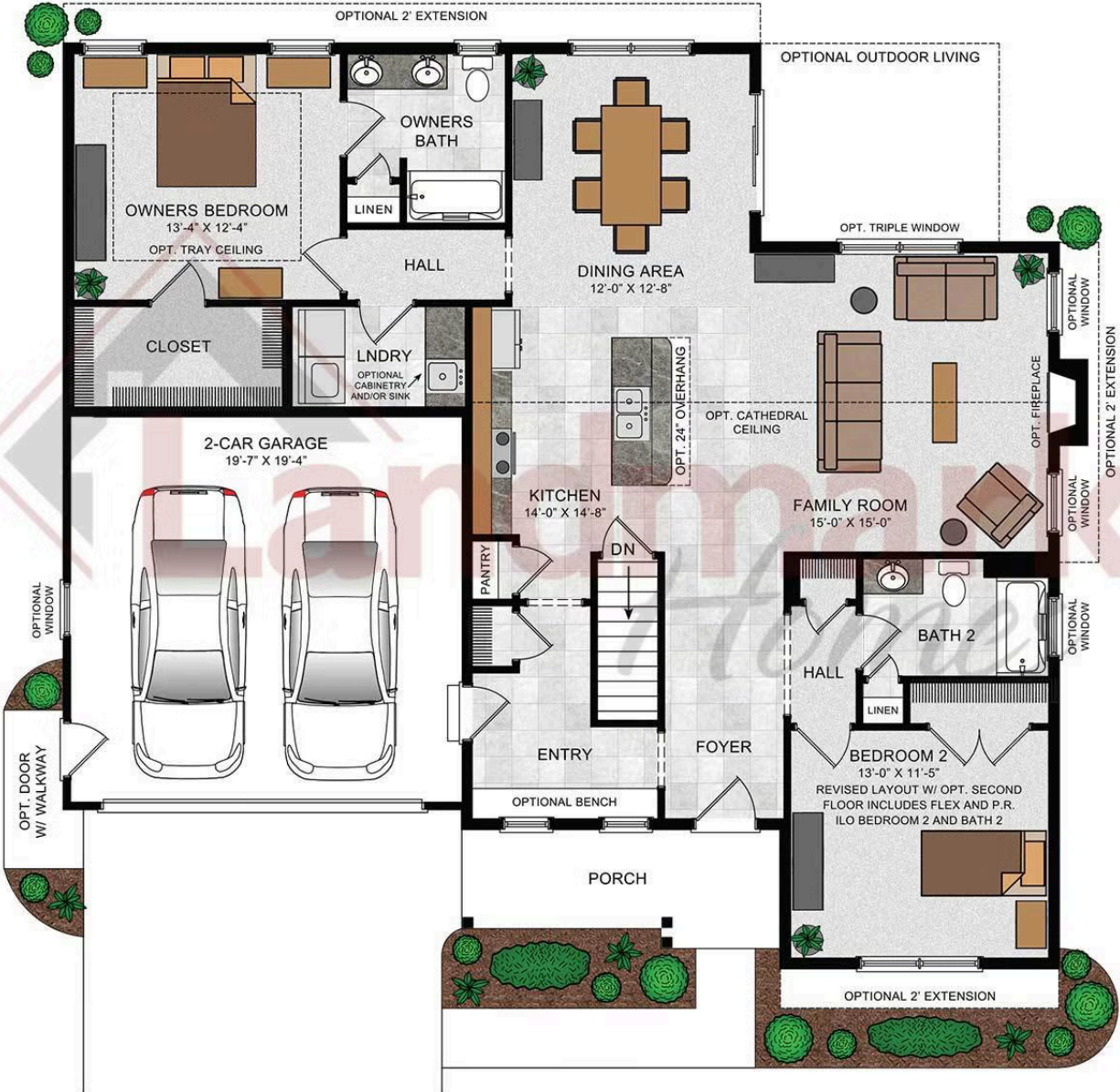


Upgraded C Trademark

Document generated 4/24/26

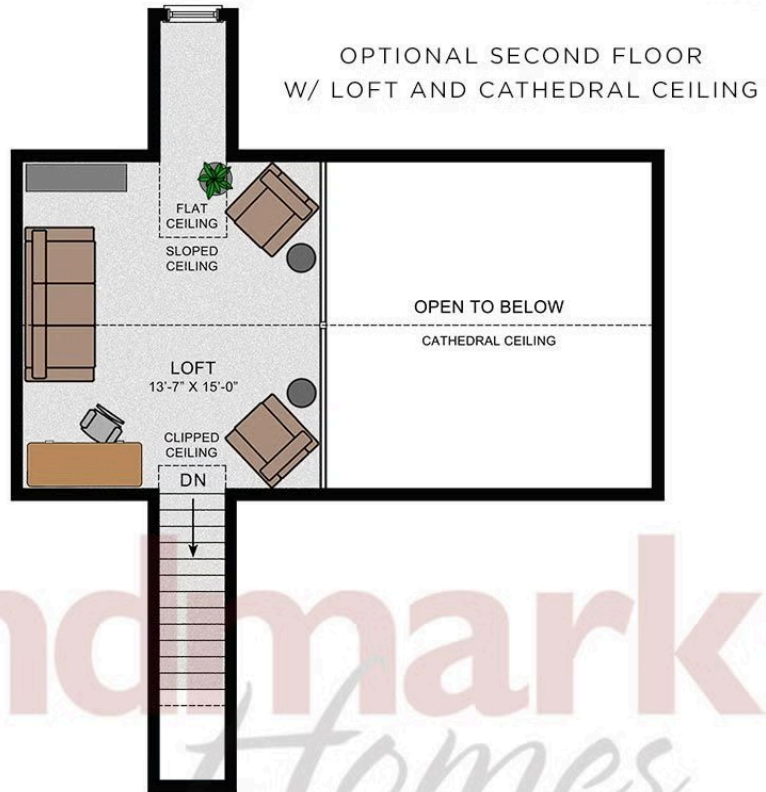
© 2026 Landmark Builders, Inc. We enforce our intellectual property rights to the fullest extent permitted by applicable law. Elevations and landscaping are artists' conceptions only. Actual construction documents take precedence over artwork. Similar photos shown are for representative purposes only. Details subject to



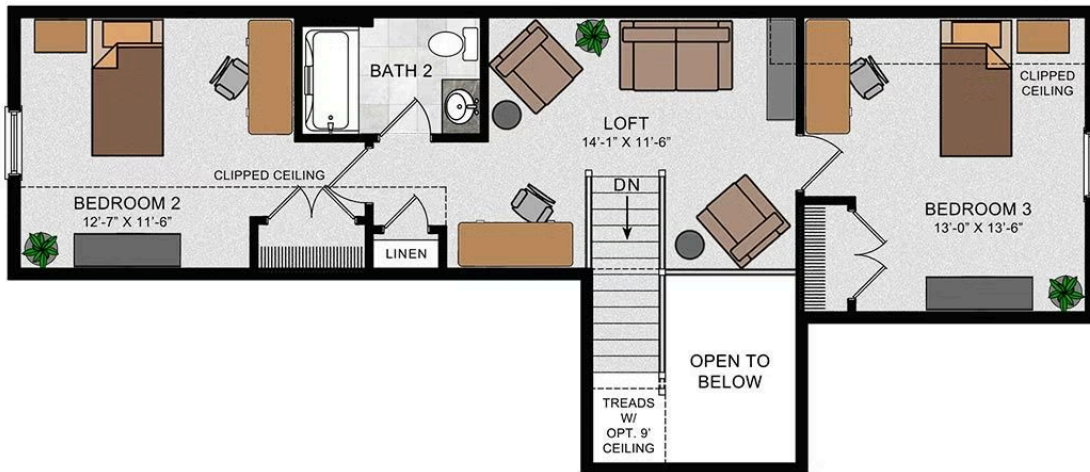


© 2023 Landmark Builders, Inc. We enforce our intellectual property rights to the fullest extent permitted by applicable law. Elevations and landscaping are artists' conceptions only. Floor plans may vary depending on elevation selected. Actual construction documents take precedence over artwork.

© 2026 Landmark Builders, Inc. We enforce our intellectual property rights to the fullest extent permitted by applicable law. Elevations and landscaping are artists' conceptions only. Actual construction documents take precedence over artwork. Similar photos shown are for representative purposes only. Details subject to change without notification. See Community Sales Manager for details.



OPTIONAL SECOND FLOOR  
W/ LOFT AND BEDROOM 3



© 2023 Landmark Builders, Inc. We enforce our intellectual property rights to the fullest extent permitted by applicable law. Elevations and landscaping are artists' conceptions only. Floor plans may vary depending on elevation selected. Actual construction documents take precedence over artwork.

© 2026 Landmark Builders, Inc. We enforce our intellectual property rights to the fullest extent permitted by applicable law. Elevations and landscaping are artists' conceptions only. Actual construction documents take precedence over artwork. Similar photos shown are for representative purposes only. Details subject to change without notification. See Community Sales Manager for details.



Single Family  
**Hartford**

Available in 1 Community

## Available Communities



### Sweetbriar 55+ Living

604 Lilliana Dr  
Lebanon, PA 17046

Low HOA

Single Family Homes Starting at  
**\$403,800**

2-3 Bed 2-2.5 Bath 1507+ Ft<sup>2</sup>

Document generated 4/24/26

© 2026 Landmark Builders, Inc. We enforce our intellectual property rights to the fullest extent permitted by applicable law. Elevations and landscaping are artists' conceptions only. Actual construction documents take precedence over artwork. Similar photos shown are for representative purposes only. Details subject to

