



Call for Price

1 Elevations Available

4 Bedrooms

2.5 Bathrooms

2,674+ Sq. Ft.

2 Car Garage

This traditional 4 bedroom home features an owner's suite with private bathroom and spacious closet. Open first-floor design with eat-in kitchen, and a bright breakfast area opens into the spacious family room with optional fireplace. Additional 2nd floor bathroom with double bowl vanity.

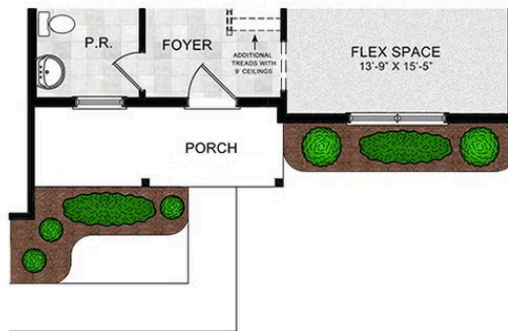
Available Elevations



Upgraded A Traditional



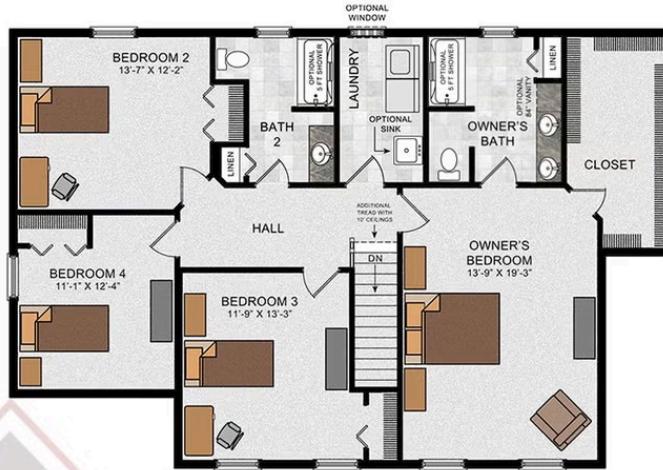
FIRST FLOOR PLAN W/
OPTIONAL ELEVATION A



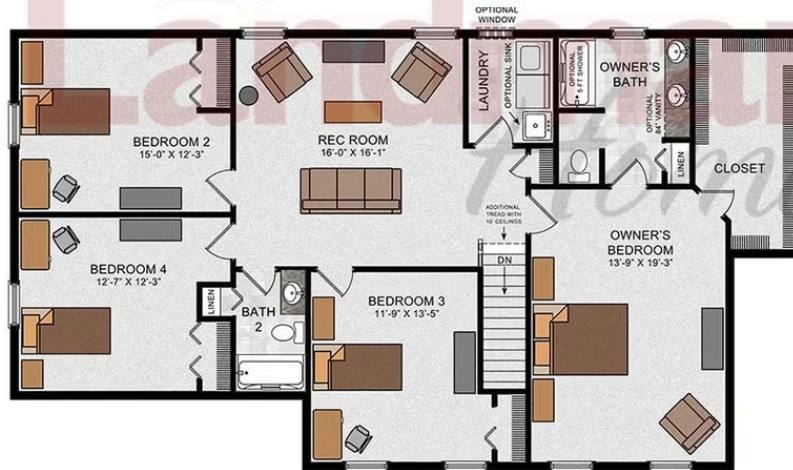
© 2019 Landmark Builders, Inc. We enforce our intellectual property rights to the fullest extent permitted by applicable law. Elevations and landscaping are artists' conceptions only. Floor plan may vary depending on elevation selected. Blueprints take precedence over artwork.

© 2026 Landmark Builders, Inc. We enforce our intellectual property rights to the fullest extent permitted by applicable law. Elevations and landscaping are artists' conceptions only. Actual construction documents take precedence over artwork. Similar photos shown are for representative purposes only. Details subject to change without notification. See Community Sales Manager for details.

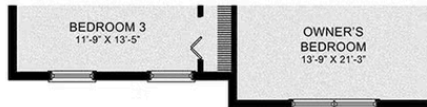
SECOND FLOOR



OPTIONAL SECOND FLOOR PLAN



SECOND FLOOR PLAN W/
OPTIONAL ELEVATION A



© 2020 Landmark Builders, Inc. We enforce our intellectual property rights to the fullest extent permitted by applicable law. Elevations and landscaping are artists' conceptions only. Floor plans may vary depending on elevation selected. Actual construction documents take precedence over artwork.

© 2026 Landmark Builders, Inc. We enforce our intellectual property rights to the fullest extent permitted by applicable law. Elevations and landscaping are artists' conceptions only. Actual construction documents take precedence over artwork. Similar photos shown are for representative purposes only. Details subject to change without notification. See Community Sales Manager for details.