



Single Family
Glenmore

Available in 1 Community



Call for Price

3 Elevations Available

3 Bedrooms

2.5 Bathrooms

2,105+ Sq. Ft.

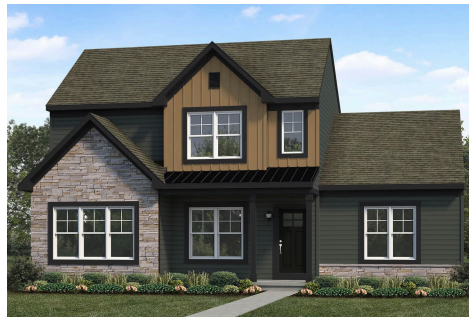
2 Car Garage

This stately 2100+ square foot home has everything. The 2-car, alley load garage enters into a mudroom, with the option to add built in lockers or a slider to a covered stoop. A vaulted ceiling in the foyer opens into dramatic 2-story ceilings in the great room with optional fireplace. The first-floor owner's suite offers a private bathroom and expansive closet and is conveniently located near the laundry room. The open kitchen design provides plenty of counter-top space and opens into the dining room, perfect for entertaining guests. The upstairs features 2 bedrooms and a full bathroom, with the option to add a loft.

Available Elevations



Traditional A Elevation



Transitional B Elevation

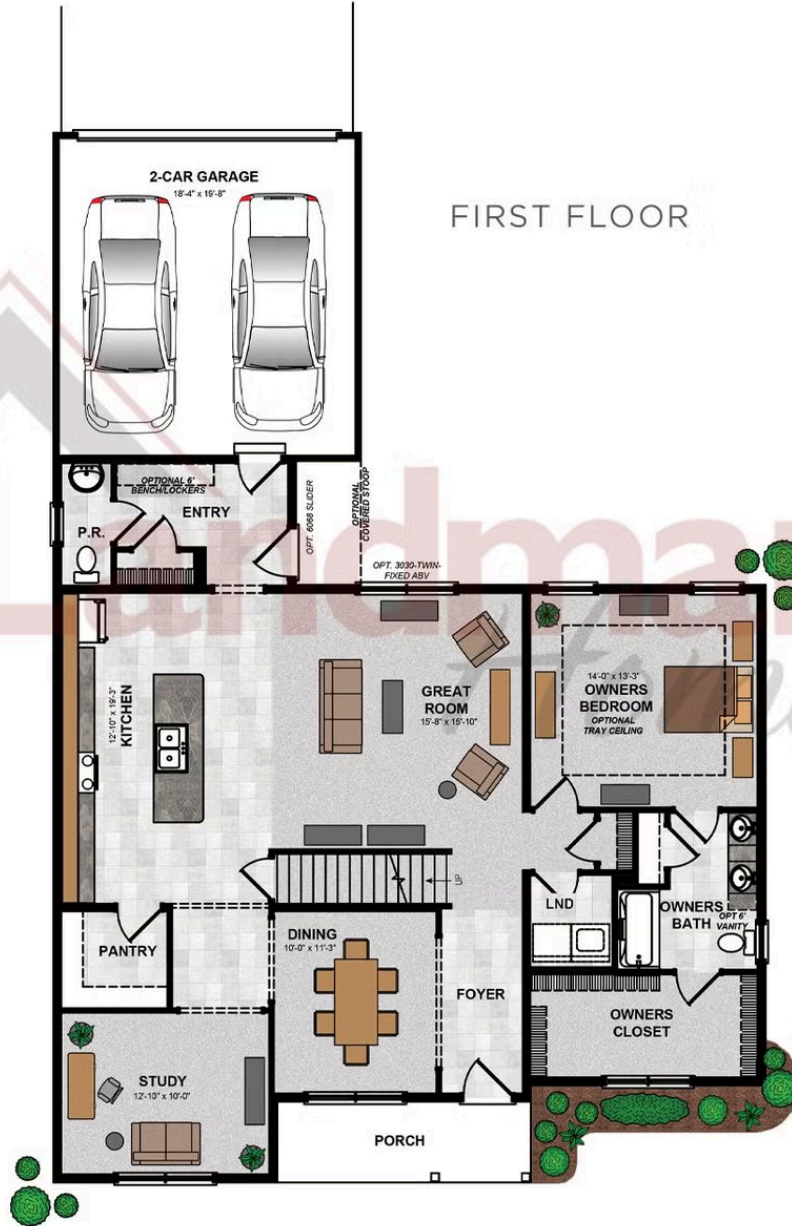


Trademark C Elevation

Document generated 4/24/26

© 2026 Landmark Builders, Inc. We enforce our intellectual property rights to the fullest extent permitted by applicable law. Elevations and landscaping are artists' conceptions only. Actual construction documents take precedence over artwork. Similar photos shown are for representative purposes only. Details subject to





© 2024 Landmark Builders, Inc. We enforce our intellectual property rights to the fullest extent permitted by applicable law. Elevations and landscaping are artists' conceptions only. Floor plans may vary depending on elevation selected. Actual construction documents take precedence over artwork.

© 2026 Landmark Builders, Inc. We enforce our intellectual property rights to the fullest extent permitted by applicable law. Elevations and landscaping are artists' conceptions only. Actual construction documents take precedence over artwork. Similar photos shown are for representative purposes only. Details subject to change without notification. See Community Sales Manager for details.

SECOND FLOOR

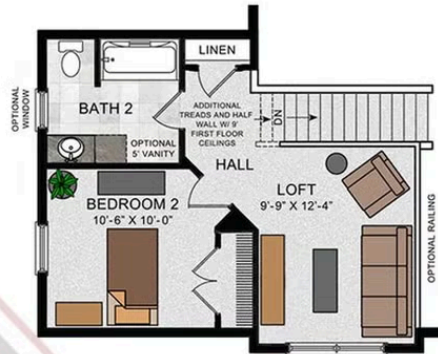


© 2023 Landmark Builders, Inc. We enforce our intellectual property rights to the fullest extent permitted by applicable law. Elevations and landscaping are artists' conceptions only. Floor plans may vary depending on elevation selected. Actual construction documents take precedence over artwork.

© 2026 Landmark Builders, Inc. We enforce our intellectual property rights to the fullest extent permitted by applicable law. Elevations and landscaping are artists' conceptions only. Actual construction documents take precedence over artwork. Similar photos shown are for representative purposes only. Details subject to change without notification. See Community Sales Manager for details.

Document generated 4/24/26

OPTIONAL SECOND FLOOR
W/ LOFT ILO BEDROOM 3



OPTIONAL SECOND FLOOR
W/ LOFT AND BEDROOM 3



OPTIONAL SECOND FLOOR
W/ BEDROOM 4



© 2024 Landmark Builders, Inc. We enforce our intellectual property rights to the fullest extent permitted by applicable law. Elevations and landscaping are artists' conceptions only. Floor plans may vary depending on elevation selected. Actual construction documents take precedence over artwork.

© 2026 Landmark Builders, Inc. We enforce our intellectual property rights to the fullest extent permitted by applicable law. Elevations and landscaping are artists' conceptions only. Actual construction documents take precedence over artwork. Similar photos shown are for representative purposes only. Details subject to change without notification. See Community Sales Manager for details.



Single Family
Glenmore

Available in 1 Community

Available Communities



Wright's Landing at Legacy Park

100 Legacy Park Drive
Mechanicsburg, PA 17055

Walking Trails, Playground,
Clubhouse

Single Family Homes Starting at
\$468,800

2-4 Bed 2-3.5 Bath 1672+ Ft²

Document generated 4/24/26

© 2026 Landmark Builders, Inc. We enforce our intellectual property rights to the fullest extent permitted by applicable law. Elevations and landscaping are artists' conceptions only. Actual construction documents take precedence over artwork. Similar photos shown are for representative purposes only. Details subject to

