



Single Family  
**Glenmore**

Available in 1 Community



## Call for Price

3 Elevations Available

3 Bedrooms

2.5 Bathrooms

2,105+ Sq. Ft.

2 Car Garage

This stately 2100+ square foot home has everything. The 2-car, alley load garage enters into a mudroom, with the option to add built in lockers or a slider to a covered stoop. A vaulted ceiling in the foyer opens into dramatic 2-story ceilings in the great room with optional fireplace. The first-floor owner's suite offers a private bathroom and expansive closet and is conveniently located near the laundry room. The open kitchen design provides plenty of counter-top space and opens into the dining room, perfect for entertaining guests. The upstairs features 2 bedrooms and a full bathroom, with the option to add a loft.

### Available Elevations



Traditional A Elevation

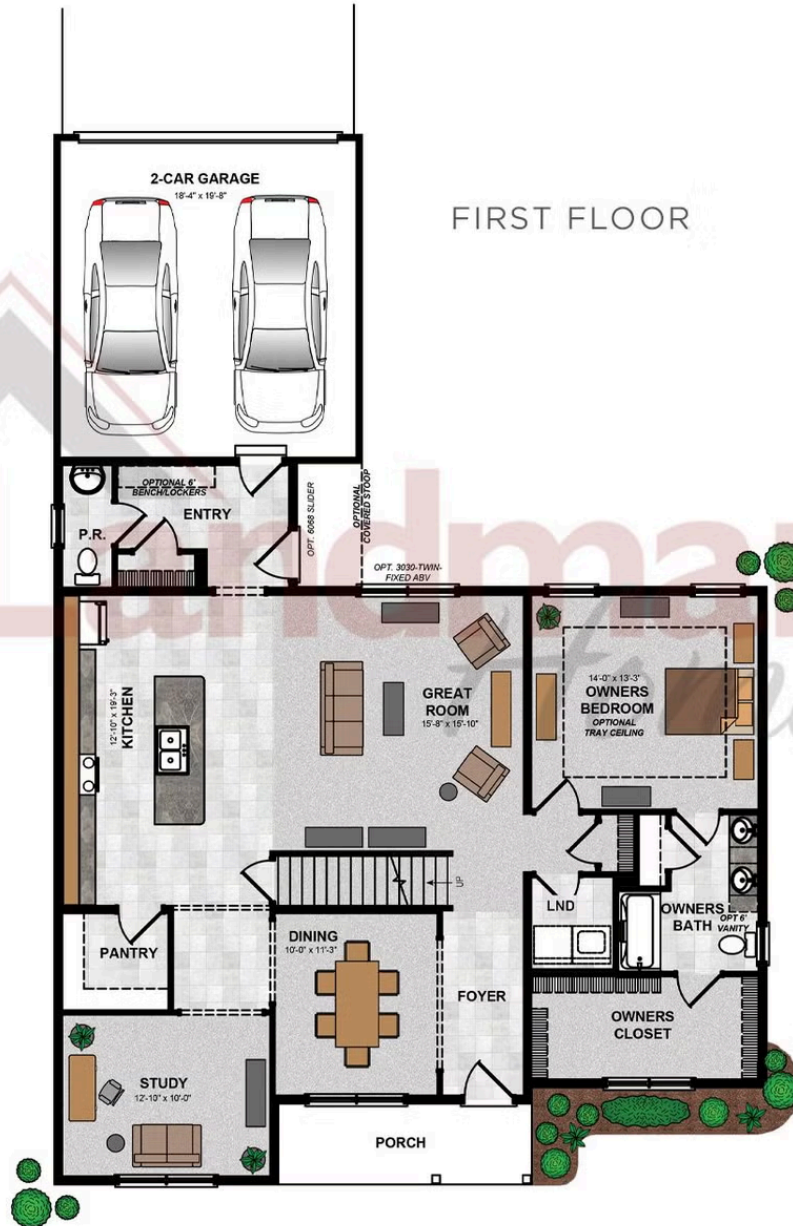


Transitional B Elevation



Trademark C Elevation





© 2024 Landmark Builders, Inc. We enforce our intellectual property rights to the fullest extent permitted by applicable law. Elevations and landscaping are artists' conceptions only. Floor plans may vary depending on elevation selected. Actual construction documents take precedence over artwork.

## SECOND FLOOR



© 2023 Landmark Builders, Inc. We enforce our intellectual property rights to the fullest extent permitted by applicable law. Elevations and landscaping are artists' conceptions only. Floor plans may vary depending on elevation selected. Actual construction documents take precedence over artwork.



OPTIONAL SECOND FLOOR  
W/ LOFT ILO BEDROOM 3



OPTIONAL SECOND FLOOR  
W/ LOFT AND BEDROOM 3



OPTIONAL SECOND FLOOR  
W/ BEDROOM 4



© 2024 Landmark Builders, Inc. We enforce our intellectual property rights to the fullest extent permitted by applicable law. Elevations and landscaping are artists' conceptions only. Floor plans may vary depending on elevation selected. Actual construction documents take precedence over artwork.





Single Family  
**Glenmore**

Available in 1 Community

## Available Communities



### Wright's Landing at Legacy Park

100 Legacy Park Drive  
Mechanicsburg, PA 17055

Walking Trails, Playground,  
Clubhouse

Single Family Homes Starting at  
**\$461,000**

2-4 Bed    2-3 Bath    1672+ Ft<sup>2</sup>

