



Single Family
Fulton

Available in 3 Communities



Call for Price

3 Elevations Available

3 Bedrooms

2.5 Bathrooms

2,144+ Sq. Ft.

2 Car Garage

With just over 2,100 square feet, a 2-car garage, and an open floor plan, this home offers both convenience and modern living. The foyer leads to the open living spaces of the first floor, with a living room, dining area, and kitchen, with access to optional outdoor living. Expand the mudroom to add an office. The second floor features 3 bedrooms, including an owner's suite with private bathroom and large closet, a secondary bathroom, and a convenient laundry area. Optionally, expand the second floor of the home to add a spacious 4th bedroom or bonus room.

Available Elevations



Upgraded B Transitional



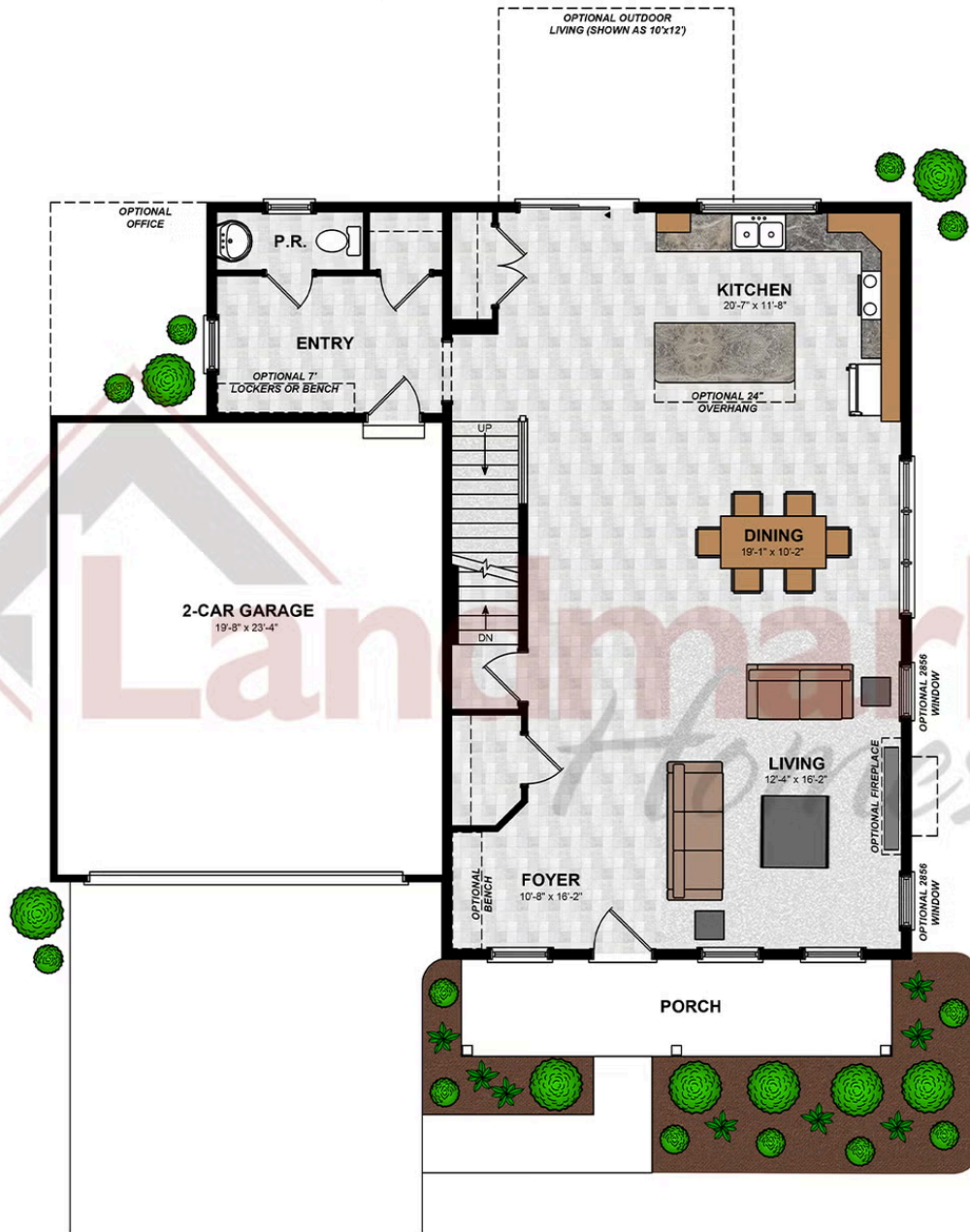
Upgraded C1 Trademark



Upgraded C2 Trademark

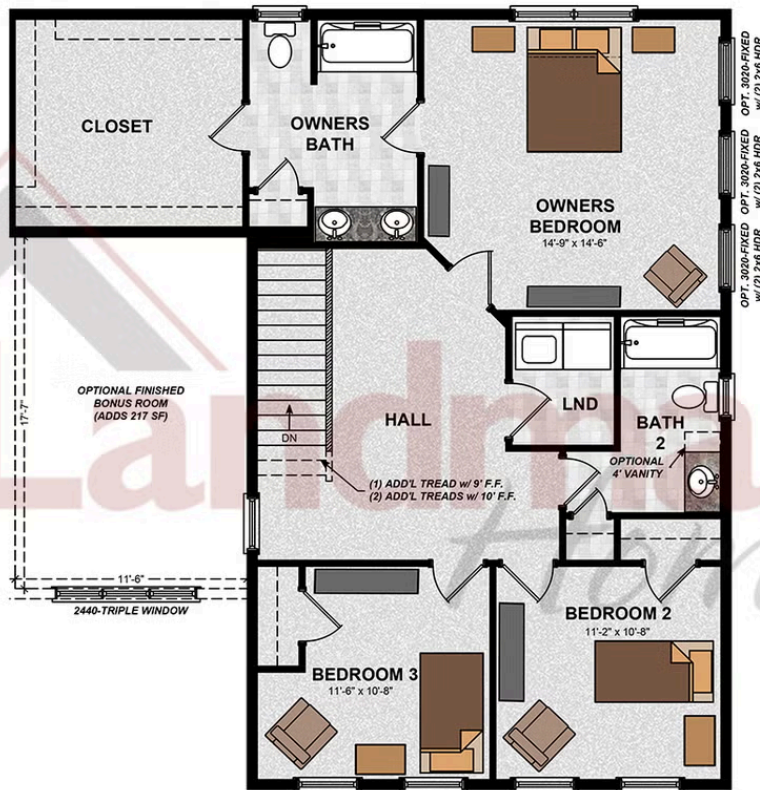


FIRST FLOOR



© 2025 Landmark Builders, Inc. We enforce our intellectual property rights to the fullest extent permitted by applicable law. Elevations and landscaping are artists' conceptions only. Floor plans may vary depending on elevation selected. Actual construction documents take precedence over artwork.

SECOND FLOOR



© 2025 Landmark Builders, Inc. We enforce our intellectual property rights to the fullest extent permitted by applicable law. Elevations and landscaping are artists' conceptions only. Floor plans may vary depending on elevation selected. Actual construction documents take precedence over artwork.



Single Family

Fulton

Available in 3 Communities

Available Communities



Wright's Landing at Legacy Park

100 Legacy Park Drive
Mechanicsburg, PA 17055

Walking Trails, Playground,
Clubhouse

Single Family Homes Starting at
\$461,000

2-4 Bed 2-3 Bath 1672+ Ft²

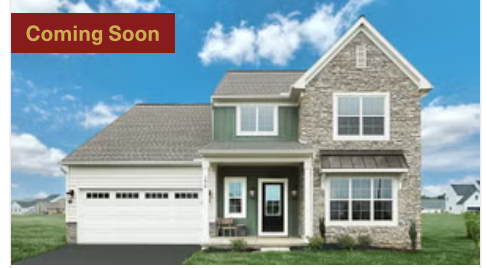


Southgate

510 Bachman Rd
Annville, PA 17003

Single Family Homes Starting at
\$466,400

2-4 Bed 2-3.5 Bath 1839+ Ft²



Freedom Square

Copenhaffer Rd
York, PA 17404

New Homes Coming Soon to
Conewago Township

Single Family Homes

2-4 Bed 2 Bath 1884+ Ft²

