



Single Family
Emory

Available in 1 Community



Call for Price

2 Elevations Available

4 Bedrooms

2.5 Bathrooms

2,339+ Sq. Ft.

2 Car Garage

Blending spacious design with everyday functionality, this two-story home is crafted to meet the needs of modern living. A welcoming front porch opens into a bright foyer, where a private study offers the perfect space for a home office, library, or flex room. The main level unfolds into an airy, open-concept layout connecting the kitchen, dining area, and living room. The kitchen is designed for both style and efficiency, featuring a large island and pantry, and easy access to an optional morning room and outdoor living area. A convenient powder room and a two-car garage enhance the home's practicality. Upstairs, the owner's suite provides a comfortable retreat with a spacious bedroom, an expansive closet, and a private bath. Three additional bedrooms offer plenty of room for family, guests, or hobbies, while a centrally located hall bath and second-floor laundry room add convenience to daily routines.

Available Elevations

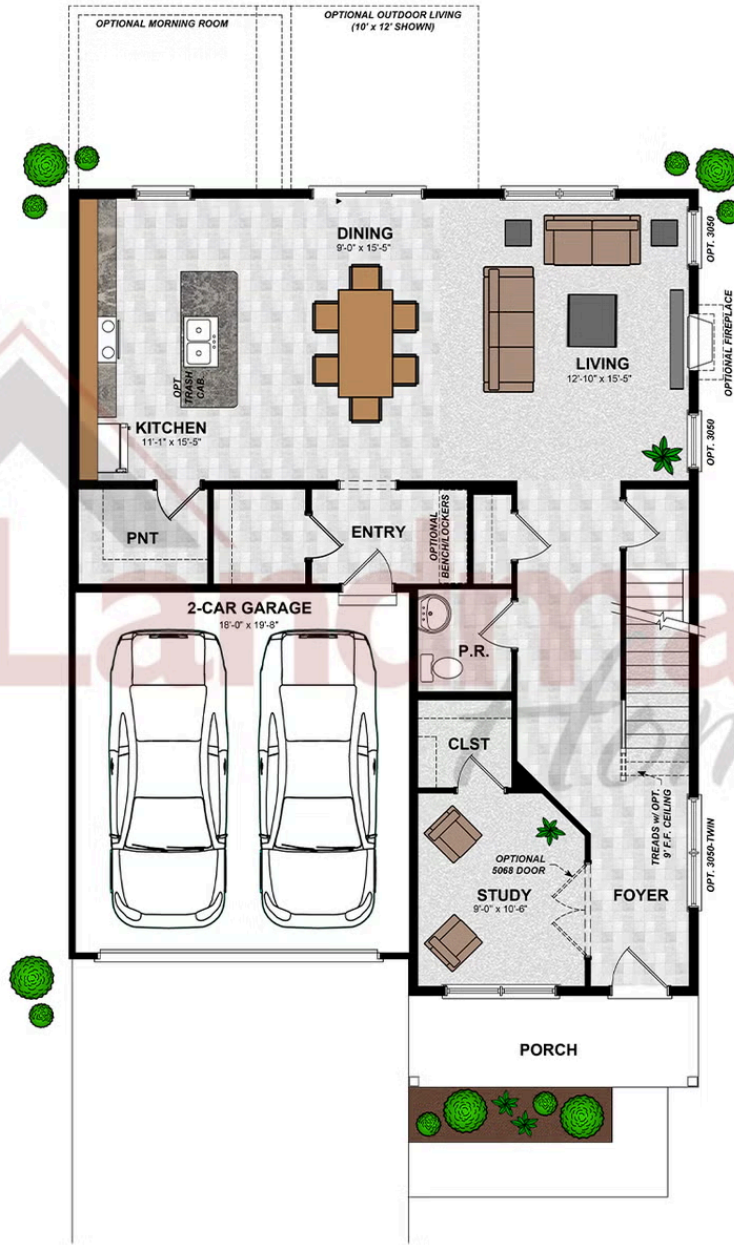


Document generated 5/7/26

© 2026 Landmark Builders, Inc. We enforce our intellectual property rights to the fullest extent permitted by applicable law. Elevations and landscaping are artists' conceptions only. Actual construction documents take precedence over artwork. Similar photos shown are for representative purposes only. Details subject to



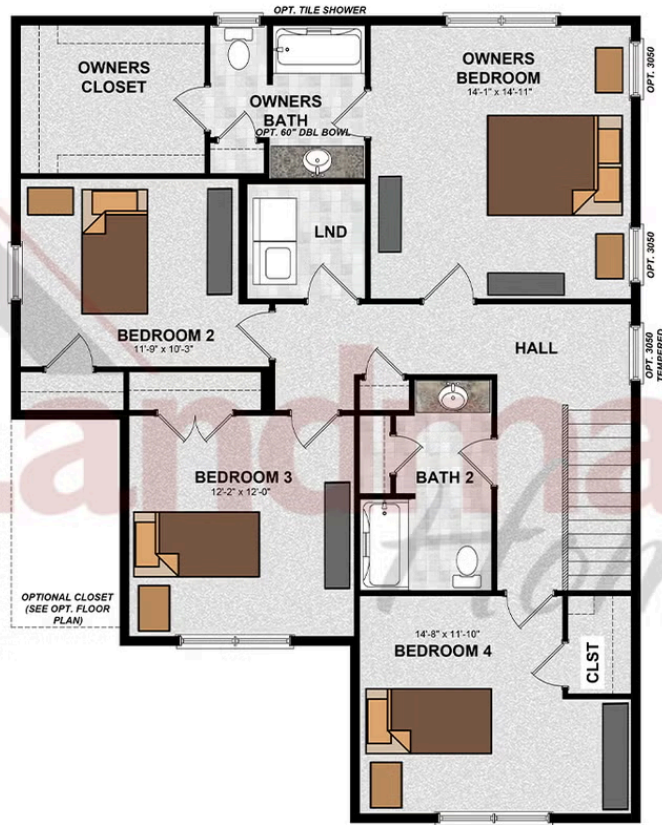
FIRST FLOOR



© 2026 Landmark Builders, Inc. We enforce our intellectual property rights to the fullest extent permitted by applicable law. Elevations and landscaping are artists' conceptions only. Floor plans may vary depending on elevation selected. Actual construction documents take precedence over artwork.

© 2026 Landmark Builders, Inc. We enforce our intellectual property rights to the fullest extent permitted by applicable law. Elevations and landscaping are artists' conceptions only. Actual construction documents take precedence over artwork. Similar photos shown are for representative purposes only. Details subject to change without notification. See Community Sales Manager for details.

SECOND FLOOR



© 2026 Landmark Builders, Inc. We enforce our intellectual property rights to the fullest extent permitted by applicable law. Elevations and landscaping are artists' conceptions only. Floor plans may vary depending on elevation selected. Actual construction documents take precedence over artwork.

© 2026 Landmark Builders, Inc. We enforce our intellectual property rights to the fullest extent permitted by applicable law. Elevations and landscaping are artists' conceptions only. Actual construction documents take precedence over artwork. Similar photos shown are for representative purposes only. Details subject to change without notification. See Community Sales Manager for details.

Document generated 5/7/26



Single Family
Emory
Available in 1 Community

Available Communities



Cardinal Court

3917 Tunnel Hill Road
York, PA 17408

New Homes Coming Soon in York
County, PA

Single Family Homes

3-4 Bed 2.5 Bath 1588+ Ft²

Document generated 5/7/26

© 2026 Landmark Builders, Inc. We enforce our intellectual property rights to the fullest extent permitted by applicable law. Elevations and landscaping are artists' conceptions only. Actual construction documents take precedence over artwork. Similar photos shown are for representative purposes only. Details subject to

