



Single Family
Darien

Available in 10 Communities



Call for Price

3 Elevations Available

4 Bedrooms

2.5 Bathrooms

2,657+ Sq. Ft.

2 Car Garage

Two-story home with over 2,600 sq feet, 4 bedrooms and 2.5 baths, and a 2-car garage. Rec room on second floor can optionally be built as a 5th bedroom with closet. Flex space room on first floor provides various uses to suit your needs, and the open great room, dining area, and kitchen accentuate the spacious feel of the first floor.

Available Elevations



Upgraded Traditional A



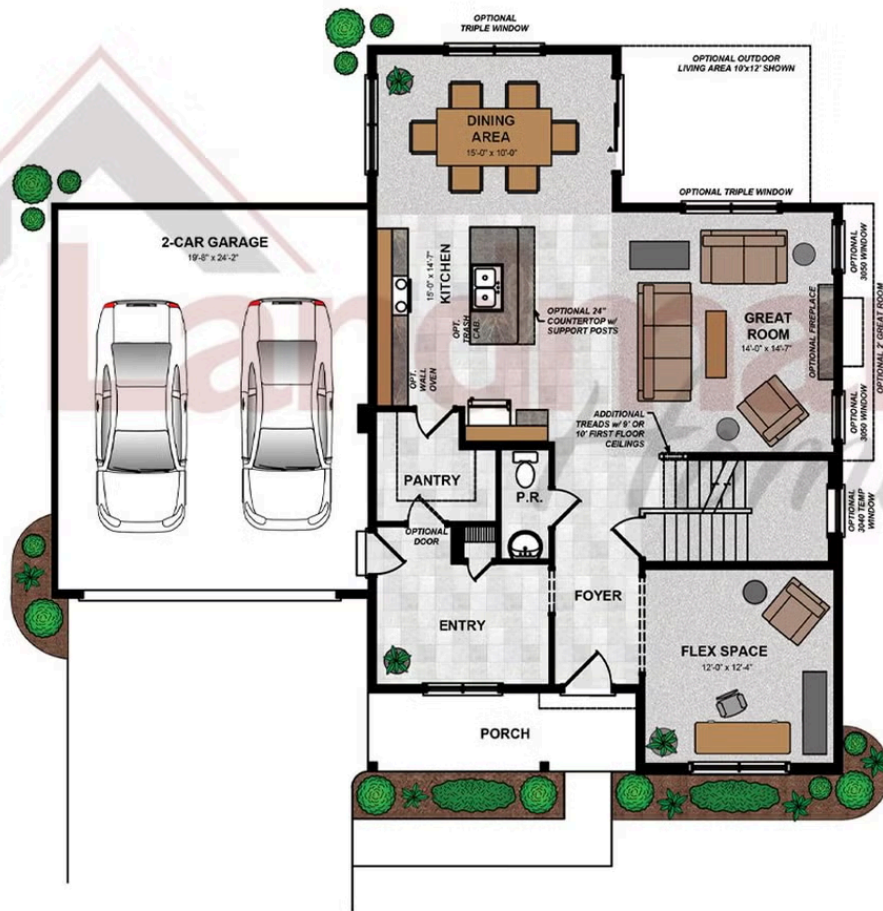
Upgraded Transitional B



Upgraded Trademark C

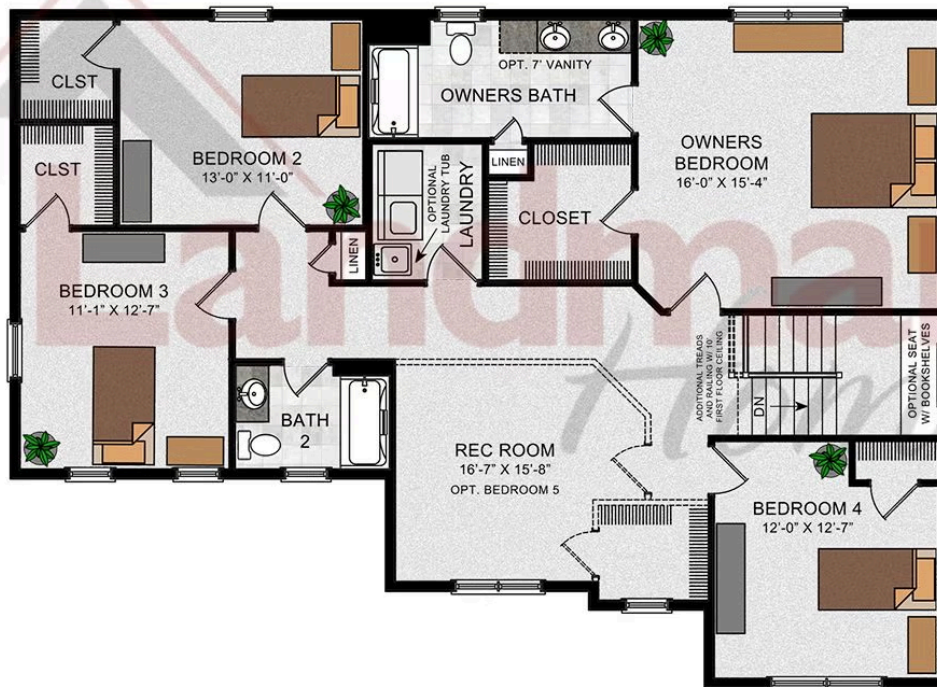


FIRST FLOOR



© 2024 Landmark Builders, Inc. We enforce our intellectual property rights to the fullest extent permitted by applicable law. Elevations and landscaping are artists' conceptions only. Floor plans may vary depending on elevation selected. Actual construction documents take precedence over artwork.

SECOND FLOOR

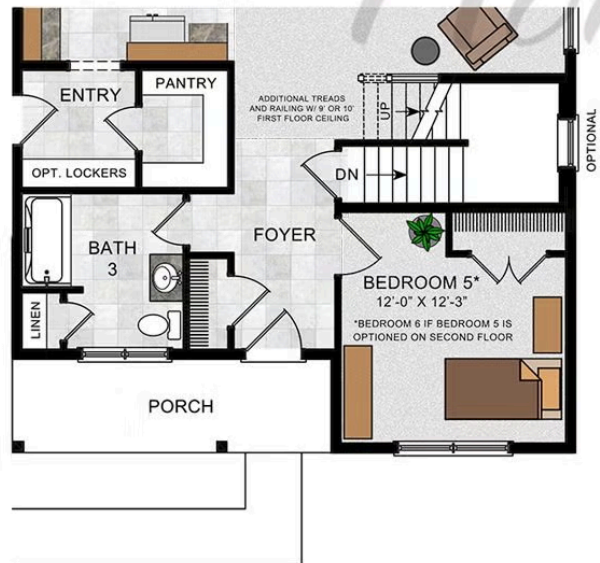


© 2022 Landmark Builders, Inc. We enforce our intellectual property rights to the fullest extent permitted by applicable law. Elevations and landscaping are artists' conceptions only. Floor plans may vary depending on elevation selected. Actual construction documents take precedence over artwork.

OPTIONAL FIRST FLOOR PLAN
W/ REDESIGNED ENTRY



OPTIONAL FIRST FLOOR PLAN
W/ BATH 3 AND BEDROOM REPLACING FLEX



© 2022 Landmark Builders, Inc. We enforce our intellectual property rights to the fullest extent permitted by applicable law. Elevations and landscaping are artists' conceptions only. Floor plans may vary depending on elevation selected. Actual construction documents take precedence over artwork.



Single Family

Darien

Available in 10 Communities





Single Family
Darien

Available in 10 Communities

Available Communities 1/2



Mountain View Estates

114 Blue Mountain Blvd
Carlisle, PA 17013

Mountain Views and Generous
Homesites

Single Family Homes Starting at
\$469,400

2-5 Bed 2-3 Bath 1829+ Ft²



Wright's Landing at Legacy Park

100 Legacy Park Drive
Mechanicsburg, PA 17055

Walking Trails, Playground,
Clubhouse

Single Family Homes Starting at
\$461,000

2-4 Bed 2-3 Bath 1672+ Ft²



Summer Layne

501 Sunset Blvd
Annville, PA 17003

Palmyra Area School District

Single Family Homes Starting at
\$534,300

3-5 Bed 2-4 Bath 2142+ Ft²



Wyndale

124 Wyndale Dr
Ephrata, PA 17522

Walking Trails and Playground

Single Family Homes Starting at
\$493,000

2-5 Bed 2-3.5 Bath 1839+ Ft²



Walton Hill

23 Vista Court
Lititz, PA 17543

Single Family Homes Starting at
\$596,865

2-4 Bed 2-3 Bath 1839+ Ft²



Copper Ridge Single Family

157 Copper Ridge Dr
Newmanstown, PA 17073

Stunning Hilltop Views

Single Family Homes Starting at
\$431,500

2-5 Bed 2-3 Bath 1839+ Ft²





Single Family

Darien

Available in 10 Communities

Available Communities 2/2



Fox Bend

250 Dahlia Circle
Lebanon, PA 17042

Generous Homesites with Scenic Views

Single Family Homes Starting at
\$498,200

3-4 Bed 2-3.5 Bath 2180+ Ft²



Trindle Place

104 Notting Hill Court
Mechanicsburg, PA 17050

Cumberland Valley Schools

Single Family Homes Starting at
\$518,900

3-5 Bed 2-3.5 Bath 2142+ Ft²



Briar Ridge

834 Kimmerlings Rd
Lebanon, PA 17046

1/2 Acre Homesites

Single Family Homes Starting at
\$441,600

2-4 Bed 2-2.5 Bath 1839+ Ft²



Southgate

510 Bachman Rd
Annville, PA 17003

Single Family Homes Starting at
\$466,400

2-4 Bed 2-3.5 Bath 1839+ Ft²

