



Single Family
Chester

Available in 1 Community



Call for Price

2 Elevations Available

3 Bedrooms

2.5 Bathrooms

1,588+ Sq. Ft.

1 Car Garage

This well-designed two-story home offers a smart layout that maximizes both space and livability. A quaint front porch leads into a bright foyer, opening to a comfortable living room that serves as the perfect place to unwind or gather with guests. Toward the back of the home, the kitchen and dining area are thoughtfully arranged for both function and flow. The kitchen features ample counter space, a central island, and easy access to an optional outdoor patio—ideal for casual meals or entertaining. A conveniently located powder room and interior access to the one-car garage add to the home's everyday practicality. Upstairs, the owner's suite provides a relaxing retreat with a private bath and generous closet space. Two additional bedrooms offer flexibility for family, visitors, or a home office, while a shared hall bath and nearby laundry area help simplify daily routines.

Available Elevations

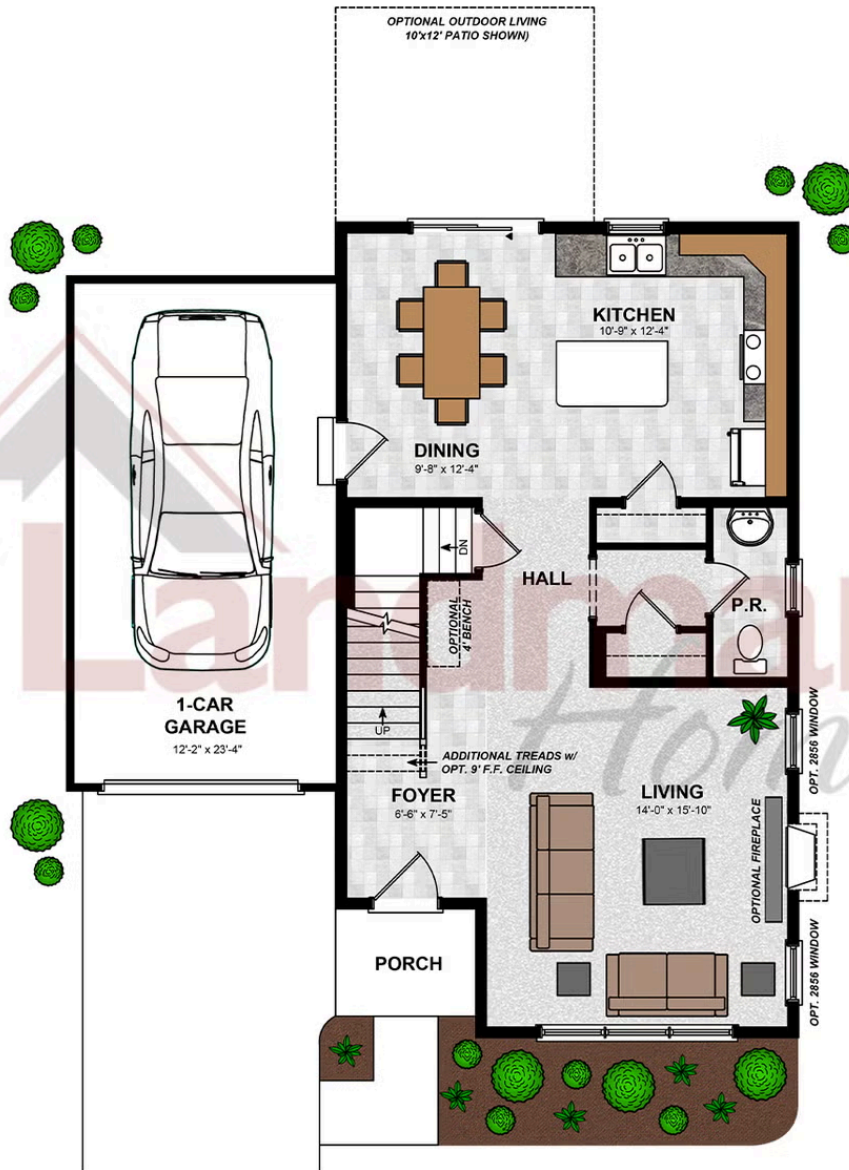


Document generated 5/7/26

© 2026 Landmark Builders, Inc. We enforce our intellectual property rights to the fullest extent permitted by applicable law. Elevations and landscaping are artists' conceptions only. Actual construction documents take precedence over artwork. Similar photos shown are for representative purposes only. Details subject to



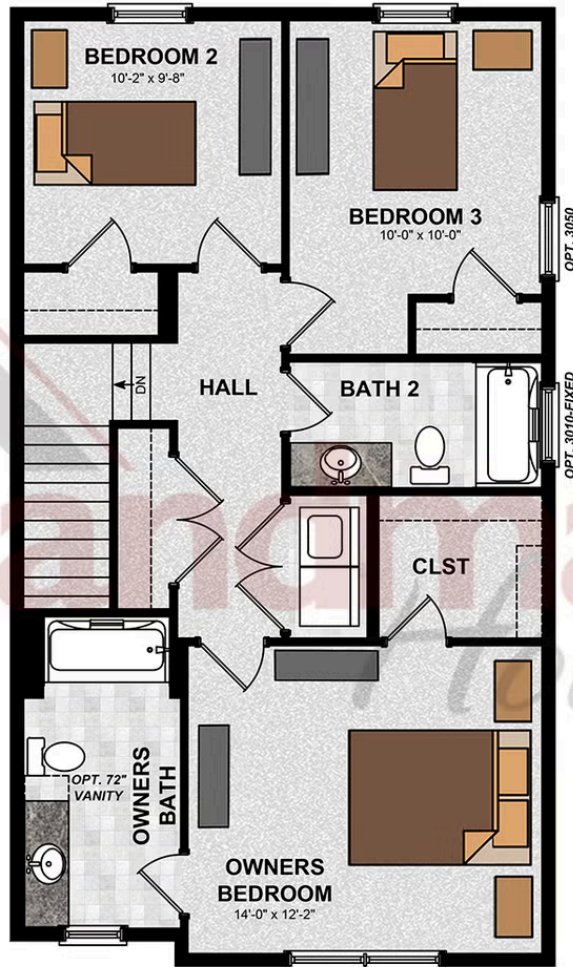
FIRST FLOOR



© 2026 Landmark Builders, Inc. We enforce our intellectual property rights to the fullest extent permitted by applicable law. Elevations and landscaping are artists' conceptions only. Floor plans may vary depending on elevation selected. Actual construction documents take precedence over artwork.

© 2026 Landmark Builders, Inc. We enforce our intellectual property rights to the fullest extent permitted by applicable law. Elevations and landscaping are artists' conceptions only. Actual construction documents take precedence over artwork. Similar photos shown are for representative purposes only. Details subject to change without notification. See Community Sales Manager for details.

SECOND FLOOR



© 2026 Landmark Builders, Inc. We enforce our intellectual property rights to the fullest extent permitted by applicable law. Elevations and landscaping are artists' conceptions only. Floor plans may vary depending on elevation selected. Actual construction documents take precedence over artwork.

© 2026 Landmark Builders, Inc. We enforce our intellectual property rights to the fullest extent permitted by applicable law. Elevations and landscaping are artists' conceptions only. Actual construction documents take precedence over artwork. Similar photos shown are for representative purposes only. Details subject to change without notification. See Community Sales Manager for details.

Document generated 5/7/26



Single Family
Chester

Available in 1 Community

Available Communities



Cardinal Court

3917 Tunnel Hill Road
York, PA 17408

New Homes Coming Soon in York
County, PA

Single Family Homes

3-4 Bed 2.5 Bath 1588+ Ft²

Document generated 5/7/26

© 2026 Landmark Builders, Inc. We enforce our intellectual property rights to the fullest extent permitted by applicable law. Elevations and landscaping are artists' conceptions only. Actual construction documents take precedence over artwork. Similar photos shown are for representative purposes only. Details subject to

