



Single Family
Charlotte

Available in 8 Communities



Call for Price

3 Elevations Available

4 Bedrooms

2.5 Bathrooms

2,651+ Sq. Ft.

2 Car Garage

Two-story home with over 2,600 sq feet, 4 bedrooms and 2.5 baths, a first-floor flex room, and a 2-car garage with mudroom entry. The Charlotte's first floor is open, welcoming, and provides versatility with a flex room just off the foyer. A bumped-out dining area off the open kitchen with center island creates a beautifully light-filled space, which can optionally open to a patio or other type of outdoor living. The great room with triple windows (and the option to add more!) adds a spacious feel to the home. Convenient 2nd floor laundry near all 4 bedrooms.

Available Elevations



Upgraded C Trademark



Upgraded B Transitional



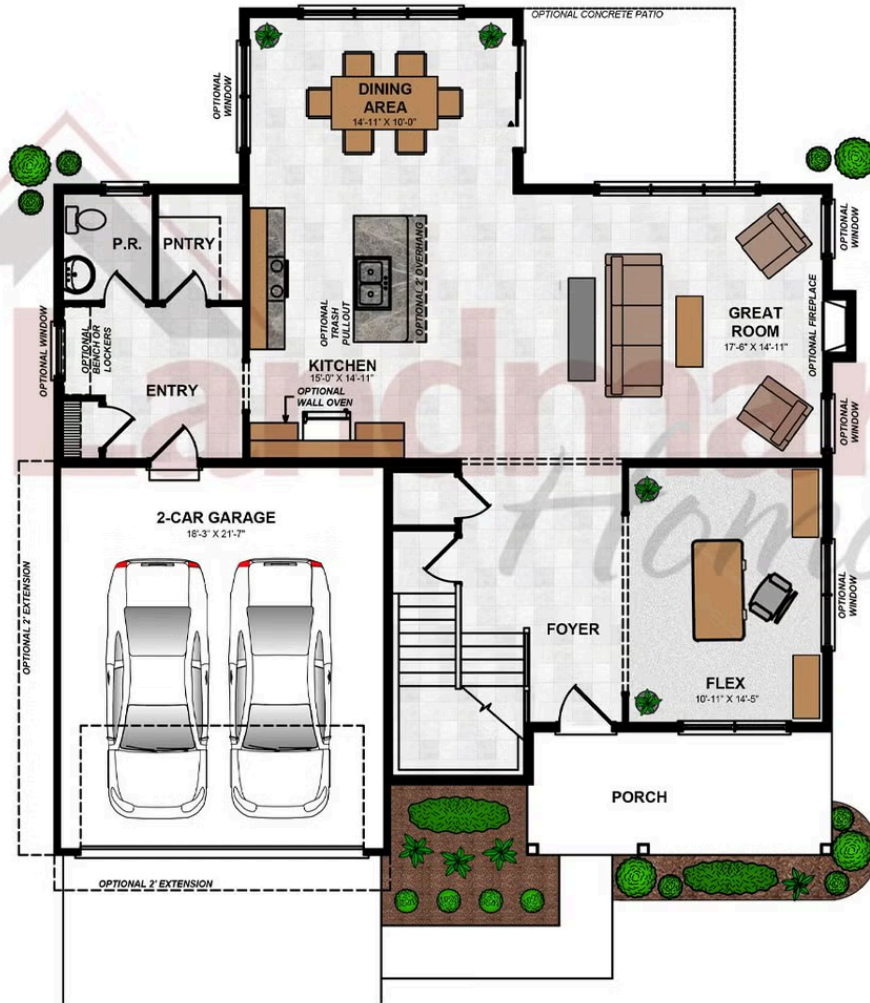
Upgraded Contemporary Elevation

Document generated 4/23/26

© 2026 Landmark Builders, Inc. We enforce our intellectual property rights to the fullest extent permitted by applicable law. Elevations and landscaping are artists' conceptions only. Actual construction documents take precedence over artwork. Similar photos shown are for representative purposes only. Details subject to



FIRST FLOOR

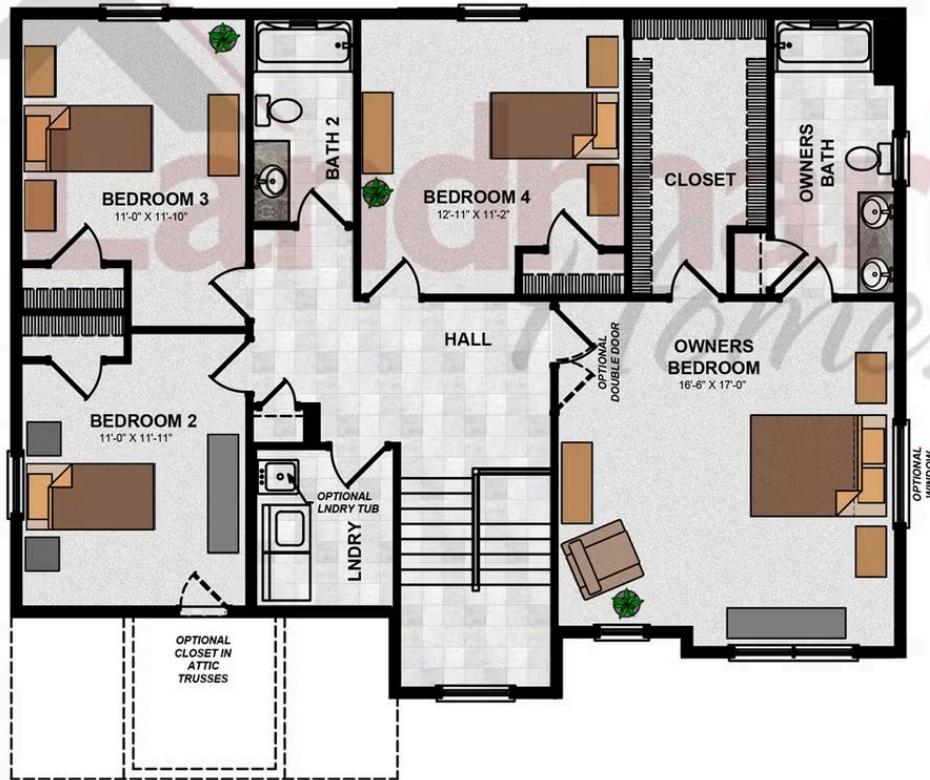


© 2025 Landmark Builders, Inc. We enforce our intellectual property rights to the fullest extent permitted by applicable law. Elevations and landscaping are artists' conceptions only. Floor plans may vary depending on elevation selected. Actual construction documents take precedence over artwork.

© 2026 Landmark Builders, Inc. We enforce our intellectual property rights to the fullest extent permitted by applicable law. Elevations and landscaping are artists' conceptions only. Actual construction documents take precedence over artwork. Similar photos shown are for representative purposes only. Details subject to change without notification. See Community Sales Manager for details.

Document generated 4/23/26

SECOND FLOOR



© 2024 Landmark Builders, Inc. We enforce our intellectual property rights to the fullest extent permitted by applicable law. Elevations and landscaping are artists' conceptions only. Floor plans may vary depending on elevation selected. Actual construction documents take precedence over artwork.

© 2026 Landmark Builders, Inc. We enforce our intellectual property rights to the fullest extent permitted by applicable law. Elevations and landscaping are artists' conceptions only. Actual construction documents take precedence over artwork. Similar photos shown are for representative purposes only. Details subject to change without notification. See Community Sales Manager for details.

Document generated 4/23/26

Available Communities 1/2



Mountain View Estates

114 Blue Mountain Blvd
 Carlisle, PA 17013

Mountain Views and Generous Homesites

Single Family Homes Starting at
\$470,400

2-5 Bed 2-3 Bath 1829+ Ft²



Summer Layne

501 Sunset Blvd
 Annville, PA 17003

Palmyra Area School District

Single Family Homes Starting at
\$532,100

3-5 Bed 2-4 Bath 2142+ Ft²



Wyndale

108 Wyndale Dr
 Ephrata, PA 17522

Walking Trails and Playground

Single Family Homes Starting at
\$512,700

2-4 Bed 2-3.5 Bath 1839+ Ft²



Walton Hill

23 Vista Court
 Lititz, PA 17543

Single Family Homes Starting at
\$565,565

2-4 Bed 2-2.5 Bath 1839+ Ft²



Copper Ridge Single Family

157 Copper Ridge Dr
 Newmanstown, PA 17073

Stunning Hilltop Views

Single Family Homes Starting at
\$439,100

2-4 Bed 2-2.5 Bath 1839+ Ft²



Fox Bend

250 Dahlia Circle
 Lebanon, PA 17042

Generous Homesites with Scenic Views

Single Family Homes Starting at
\$496,700

3-4 Bed 2.5-3.5 Bath 2180+ Ft²



Available Communities 2/2



Briar Ridge

834 Kimmerlings Rd
Lebanon, PA 17046

1/2 Acre Homesites

Single Family Homes Starting at
\$441,600

2-4 Bed 2-2.5 Bath 1839+ Ft²



Southgate

129 Alexandria Dr
Annville, PA 17003

Single Family Homes Starting at
\$477,600

2-4 Bed 2-3.5 Bath 1911+ Ft²

