



Single Family
Callahan

Available in 3 Communities



Call for Price

3 Elevations Available

4 Bedrooms

3.5 Bathrooms

3,563+ Sq. Ft.

2 Car Garage

This spacious and open 2-story home plan with 3,500+ square feet features a 1st floor owner's suite, tucked away at the rear of the home, and 3 additional bedrooms, plus a loft, on the second floor. Generous spaces, an open plan characterize the first floor living spaces, with classic design features. The foyer, flanked by a study and dining room, opens to a sweeping 2-story great room that flows into the spacious kitchen and bumped out breakfast area. A large pantry is convenient to kitchen, but tucked out of sight, near the optional butler's pantry. A mudroom entry from the garage is located near the first floor laundry room.

Available Elevations



Upgraded Contemporary Elevation

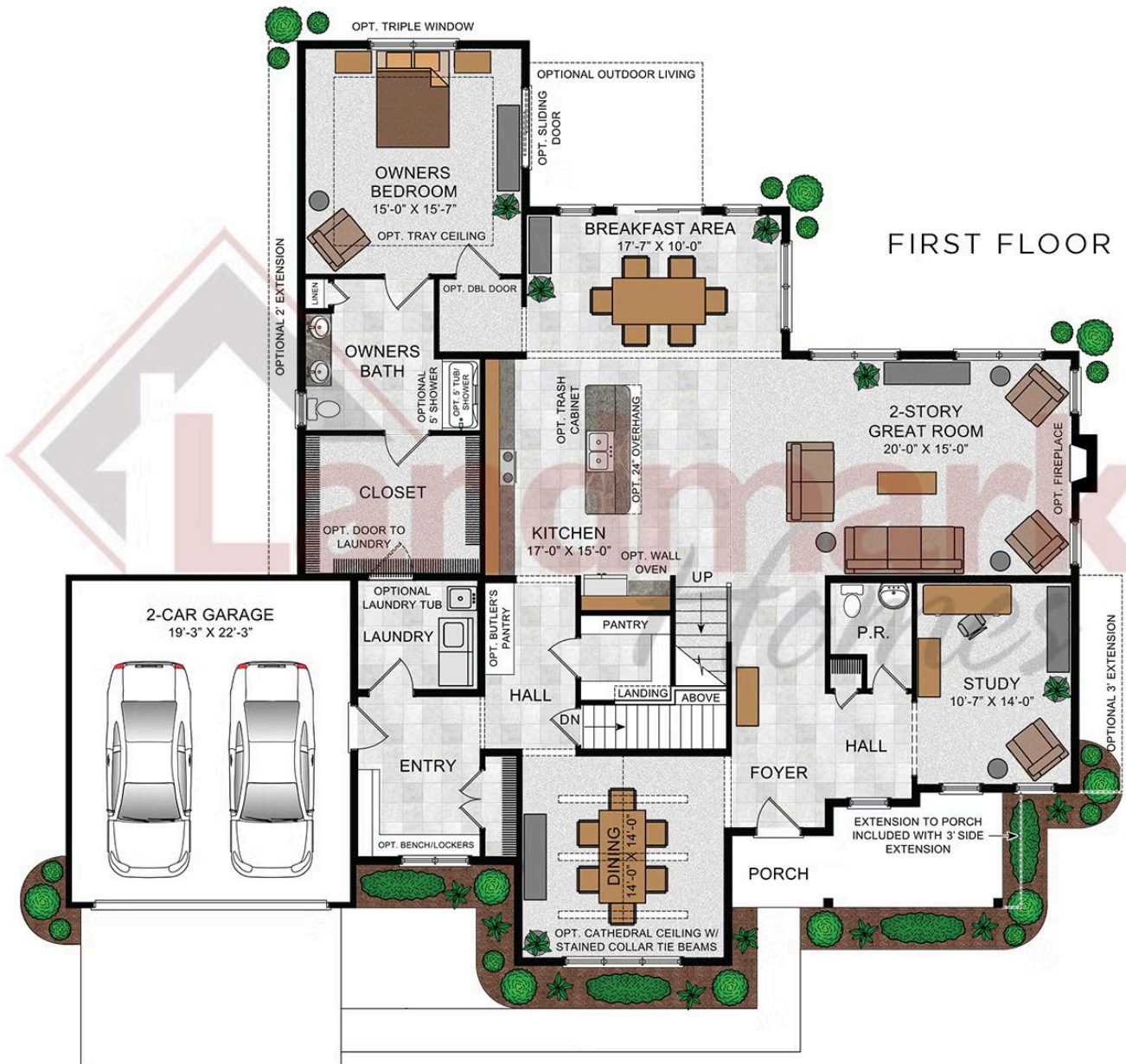


Upgraded B Transitional



Upgraded A Traditional





© 2022 Landmark Builders, Inc. We enforce our intellectual property rights to the fullest extent permitted by applicable law. Elevations and landscaping are artists' conceptions only. Floor plans may vary depending on elevation selected. Actual construction documents take precedence over artwork.

SECOND FLOOR



© 2022 Landmark Builders, Inc. We enforce our intellectual property rights to the fullest extent permitted by applicable law. Elevations and landscaping are artists' conceptions only. Floor plans may vary depending on elevation selected. Actual construction documents take precedence over artwork.



Single Family
Callahan

Available in 3 Communities

Available Communities



Hawk Valley Estates

200 West Valley Rd
Denver, PA 17517

1/2 Acre Homesites

Single Family Homes Starting at
\$580,900

3-5 Bed 2.5-3.5 Bath 2180+ Ft²



Fox Bend

250 Dahlia Circle
Lebanon, PA 17042

Generous Homesites with Scenic Views

Single Family Homes Starting at
\$498,200

3-4 Bed 2.5-3.5 Bath 2180+ Ft²



Quinn Estates

220 N Cornwall Rd E
Lebanon, PA 17042

1 Acre Homesites

Single Family Homes

3-4 Bed 2-3.5 Bath 2386+ Ft²

