



Single Family  
**Brookfield**

Available in 11 Communities



# Call for Price

3 Elevations Available

4 Bedrooms

2.5 Bathrooms

3,259+ Sq. Ft.

2 Car Garage

Grand entry and convenient staircase accessing both foyer and kitchen. Sweeping kitchen design allows you to cook and admire the fireplace at the same time. Off of the kitchen is a mud room, powder room and spacious closet. Dining room and living room to the front of the home. First floor office/study off of the great room.

## Available Elevations



Upgraded B Transitional



Upgraded A Traditional



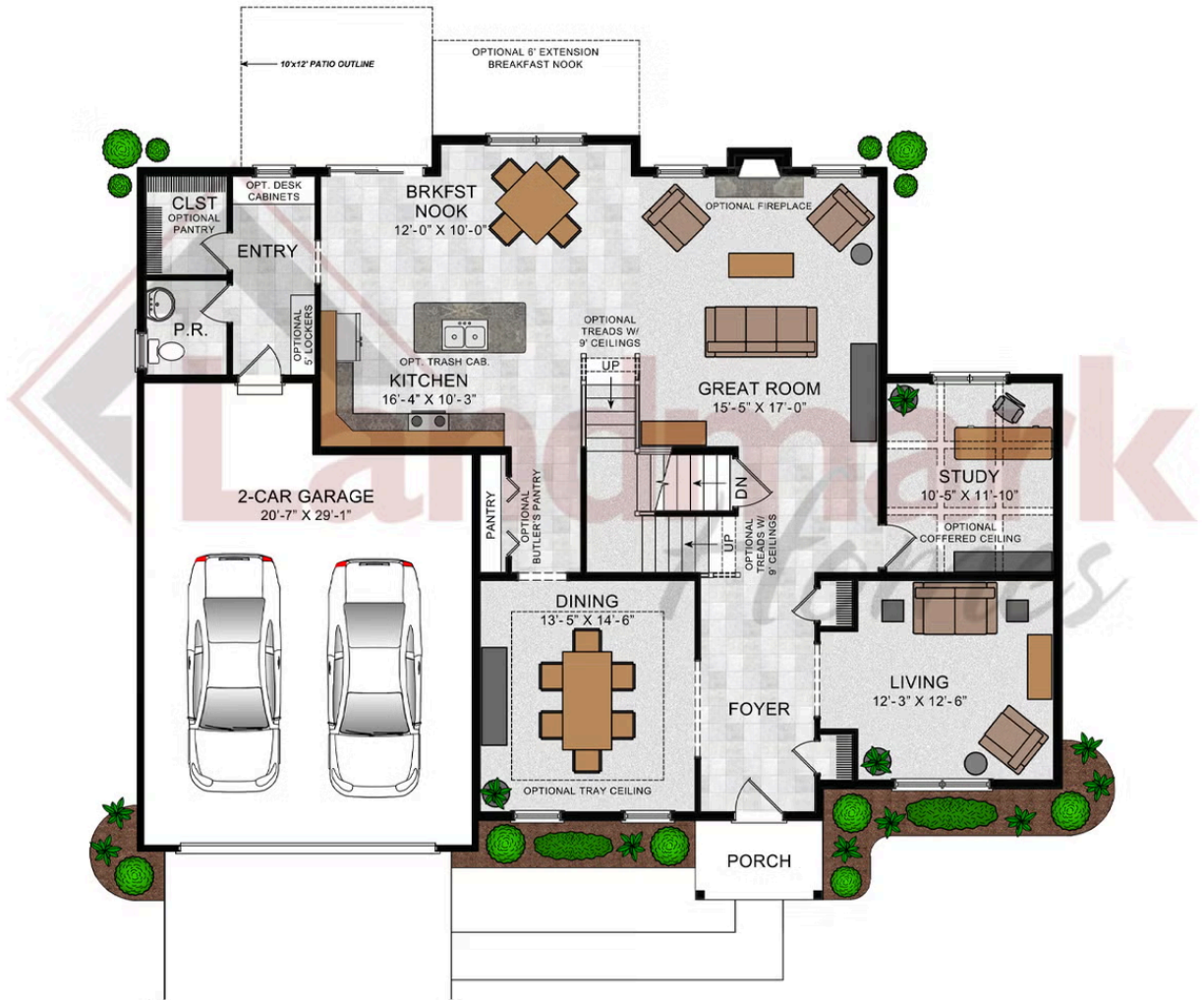
Upgraded C Trademark

Document generated 4/26/26

© 2026 Landmark Builders, Inc. We enforce our intellectual property rights to the fullest extent permitted by applicable law. Elevations and landscaping are artists' conceptions only. Actual construction documents take precedence over artwork. Similar photos shown are for representative purposes only. Details subject to



FIRST FLOOR



© 2025 Landmark Builders, Inc. We enforce our intellectual property rights to the fullest extent permitted by applicable law. Elevations and landscaping are artists' conceptions only. Floor plans may vary depending on elevation selected. Actual construction documents take precedence over artwork.

© 2026 Landmark Builders, Inc. We enforce our intellectual property rights to the fullest extent permitted by applicable law. Elevations and landscaping are artists' conceptions only. Actual construction documents take precedence over artwork. Similar photos shown are for representative purposes only. Details subject to change without notification. See Community Sales Manager for details.

SECOND FLOOR



OPT. SECOND FLOOR LAYOUT  
W/ RELOCATED OWNERS SUITE

OPT. BATH 3  
W/ CLOSET AND OPTIONAL  
RAISED REC ROOM



© 2021 Landmark Builders, Inc. We enforce our intellectual property rights to the fullest extent permitted by applicable law. Elevations and landscaping are artists' conceptions only. Floor plans may vary depending on elevation selected. Actual construction documents take precedence over artwork.

© 2026 Landmark Builders, Inc. We enforce our intellectual property rights to the fullest extent permitted by applicable law. Elevations and landscaping are artists' conceptions only. Actual construction documents take precedence over artwork. Similar photos shown are for representative purposes only. Details subject to change without notification. See Community Sales Manager for details.

## Available Communities 1/2



### Hawk Valley Estates

200 West Valley Rd  
Denver, PA 17517

1/2 Acre Homesites

Single Family Homes Starting at  
**\$574,000**

3-5 Bed 2.5-3.5 Bath 2180+ Ft<sup>2</sup>



### Mountindale

4817 Mountainrise Drive  
Harrisburg, PA 17110

Spacious, Wooded Homesites

Single Family Homes Starting at  
**\$704,700**

3-4 Bed 2.5-3.5 Bath 2711+ Ft<sup>2</sup>



### Mountain View Estates

114 Blue Mountain Blvd  
Carlisle, PA 17013

Mountain Views and Generous Homesites

Single Family Homes Starting at  
**\$470,400**

2-5 Bed 2-3 Bath 1829+ Ft<sup>2</sup>



### Wright's Landing at Legacy Park

100 Legacy Park Drive  
Mechanicsburg, PA 17055

Walking Trails, Playground,  
Clubhouse

Single Family Homes Starting at  
**\$468,800**

2-4 Bed 2-3.5 Bath 1672+ Ft<sup>2</sup>



### Summer Layne

501 Sunset Blvd  
Annville, PA 17003

Palmyra Area School District

Single Family Homes Starting at  
**\$532,100**

3-5 Bed 2-4 Bath 2142+ Ft<sup>2</sup>



### Wyndale

108 Wyndale Dr  
Ephrata, PA 17522

Walking Trails and Playground

Single Family Homes Starting at  
**\$512,700**

2-4 Bed 2-3.5 Bath 1839+ Ft<sup>2</sup>



Single Family  
**Brookfield**

Available in 11 Communities

## Available Communities 2/2



### Copper Ridge Single Family

157 Copper Ridge Dr  
Newmanstown, PA 17073

Stunning Hilltop Views

Single Family Homes Starting at  
**\$439,100**

2-4 Bed 2-2.5 Bath 1839+ Ft<sup>2</sup>



### Fox Bend

250 Dahlia Circle  
Lebanon, PA 17042

Generous Homesites with Scenic Views

Single Family Homes Starting at  
**\$496,700**

3-4 Bed 2.5-3.5 Bath 2180+ Ft<sup>2</sup>



### The Meadows at Colonial Club

1002 Edorma Court  
Harrisburg, PA 17112

Large Homesites

Single Family Homes

4 Bed 2.5-3.5 Bath 2868+ Ft<sup>2</sup>



### Southgate

129 Alexandria Dr  
Annville, PA 17003

Single Family Homes Starting at  
**\$477,600**

2-4 Bed 2-3.5 Bath 1911+ Ft<sup>2</sup>



### Quinn Estates

220 N Cornwall Rd E  
Lebanon, PA 17042

1 Acre Homesites

Single Family Homes

3-4 Bed 2-3.5 Bath 2386+ Ft<sup>2</sup>

Document generated 4/26/26

© 2026 Landmark Builders, Inc. We enforce our intellectual property rights to the fullest extent permitted by applicable law. Elevations and landscaping are artists' conceptions only. Actual construction documents take precedence over artwork. Similar photos shown are for representative purposes only. Details subject to

