



Single Family

Bridgemont

Available in 5 Communities



Call for Price

3 Elevations Available

3 Bedrooms

2.5 Bathrooms

2,711+ Sq. Ft.

2 Car Garage

One story living at its best and over 2,700 sq feet! The expansive owner's suite features a spacious closet and convenient laundry. The open kitchen has an optional shared cathedral ceiling with the great room. A dining room and breakfast area provide ample seating for entertaining. A private study off the mudroom can provide various uses to suit your needs.

Available Elevations



Upgraded C Trademark

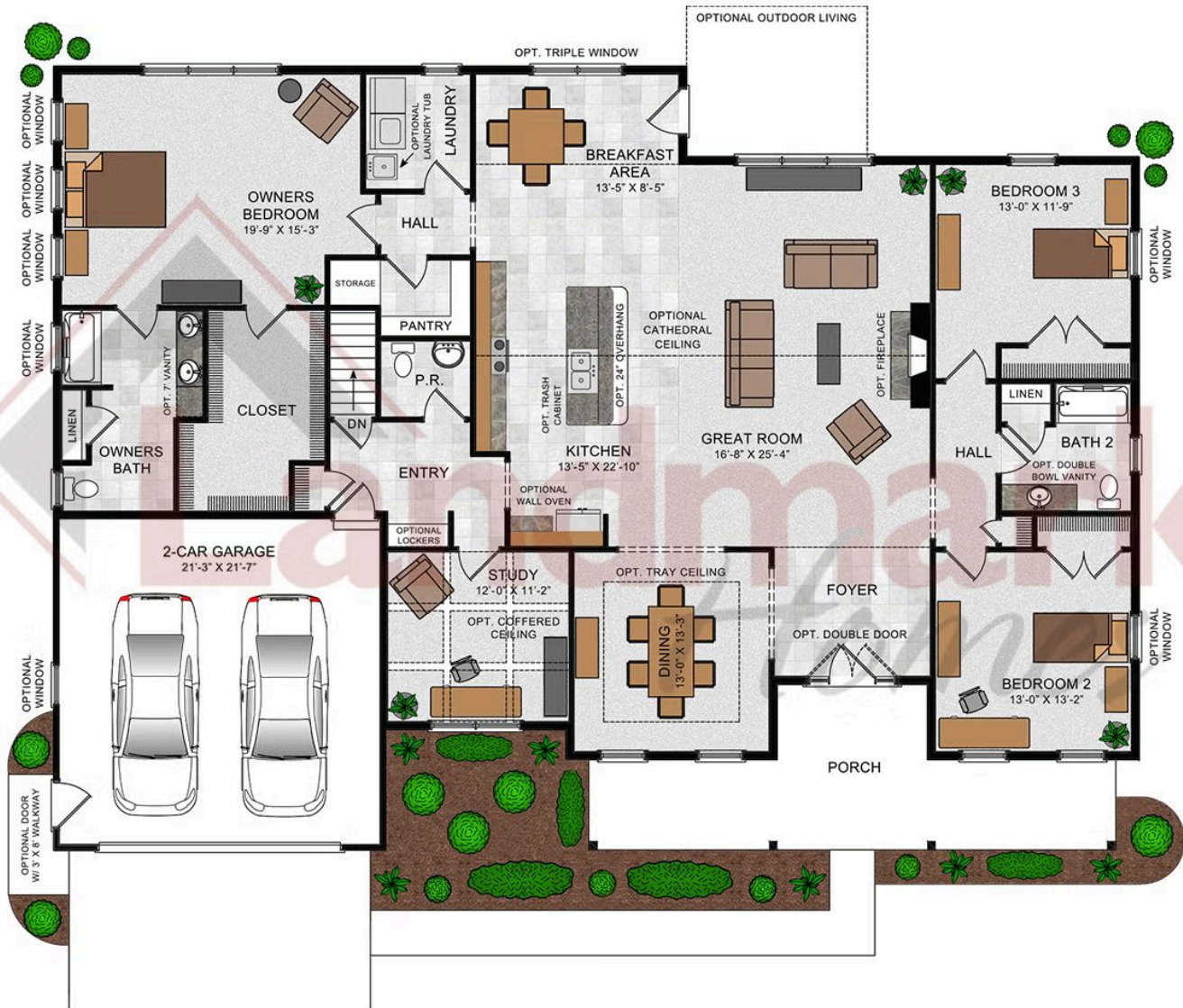


Upgraded A Traditional



Upgraded B Transitional





© 2022 Landmark Builders, Inc. We enforce our intellectual property rights to the fullest extent permitted by applicable law. Elevations and landscaping are artists' conceptions only. Floor plans may vary depending on elevation selected. Actual construction documents take precedence over artwork.



Single Family

Bridgemont

Available in 5 Communities

Available Communities



Hawk Valley Estates

200 West Valley Rd
Denver, PA 17517

1/2 Acre Homesites

Single Family Homes Starting at
\$580,900

3-5 Bed 2.5-3.5 Bath 2180+ Ft²



Mountindale

4817 Mountainrise Drive
Harrisburg, PA 17110

Spacious, Wooded Homesites

Single Family Homes Starting at
\$710,400

3-4 Bed 2.5-3.5 Bath 2711+ Ft²



Mountain View Estates

114 Blue Mountain Blvd
Carlisle, PA 17013

Mountain Views and Generous
Homesites

Single Family Homes Starting at
\$469,400

2-4 Bed 2-3 Bath 1829+ Ft²



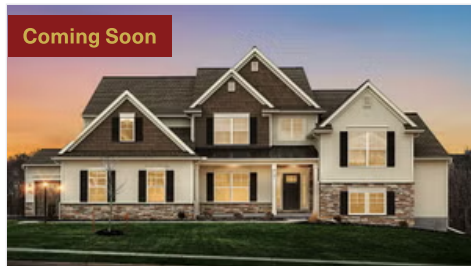
Fox Bend

250 Dahlia Circle
Lebanon, PA 17042

Generous Homesites with Scenic
Views

Single Family Homes Starting at
\$498,200

3-4 Bed 2.5-3.5 Bath 2180+ Ft²



Coming Soon

Quinn Estates

220 N Cornwall Rd E
Lebanon, PA 17042

1 Acre Homesites

Single Family Homes

3-4 Bed 2-3.5 Bath 2386+ Ft²

