



Single Family
Berkley

Available in 5 Communities



Call for Price

4 Elevations Available

3 Bedrooms

2.5 Bathrooms

2,180+ Sq. Ft.

2 Car Garage

Convenient first-floor living with a charming exterior design, including a welcoming front porch. The Berkley features an open floor plan, a 2-car garage with mudroom entry, and the option for a second-floor loft space or an additional bedroom, full bathroom, and loft. The owner's suite is situated in its own corner of the house, with a private bathroom and expansive closet. The kitchen opens to the family room with the option for a cathedral ceiling with wood beams. Explore all the options available to make the Berkley model suit your personal needs!

Available Elevations



Upgraded Contemporary Elevation



Upgraded C Trademark



Upgraded A Traditional



Upgraded B Transitional

Document generated 4/24/26

© 2026 Landmark Builders, Inc. We enforce our intellectual property rights to the fullest extent permitted by applicable law. Elevations and landscaping are artists' conceptions only. Actual construction documents take precedence over artwork. Similar photos shown are for representative purposes only. Details subject to

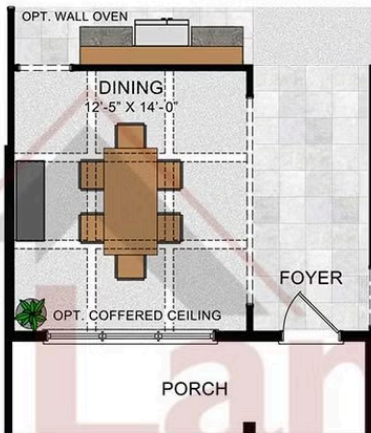




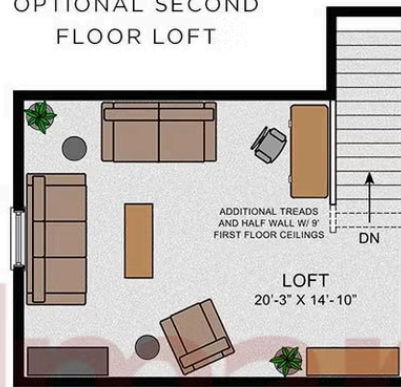
© 2022 Landmark Builders, Inc. We enforce our intellectual property rights to the fullest extent permitted by applicable law. Elevations and landscaping are artists' conceptions only. Floor plans may vary depending on elevation selected. Actual construction documents take precedence over artwork.

© 2026 Landmark Builders, Inc. We enforce our intellectual property rights to the fullest extent permitted by applicable law. Elevations and landscaping are artists' conceptions only. Actual construction documents take precedence over artwork. Similar photos shown are for representative purposes only. Details subject to change without notification. See Community Sales Manager for details.

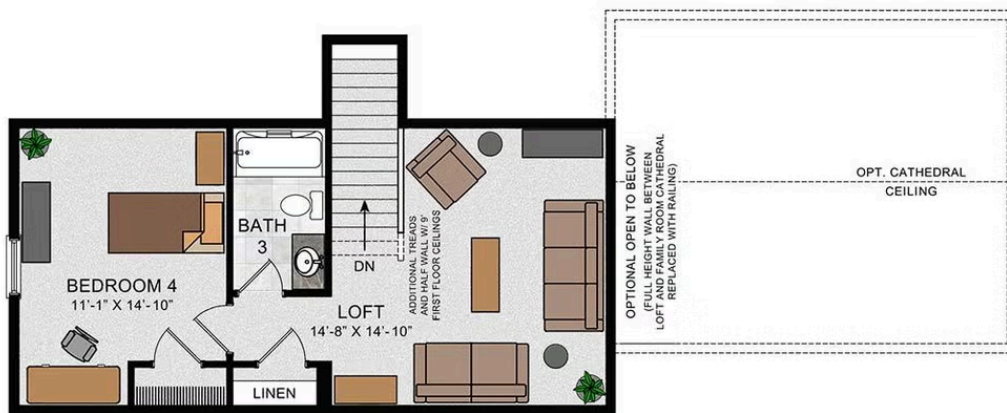
OPTIONAL DINING
 REPLACING STUDY



OPTIONAL SECOND
 FLOOR LOFT



OPTIONAL SECOND FLOOR PLAN W/ 4TH BEDROOM
 AND OPTIONAL LOFT OPEN TO FAMILY ROOM



© 2022 Landmark Builders, Inc. We enforce our intellectual property rights to the fullest extent permitted by applicable law. Elevations and landscaping are artists' conceptions only. Floor plans may vary depending on elevation selected. Actual construction documents take precedence over artwork.

© 2026 Landmark Builders, Inc. We enforce our intellectual property rights to the fullest extent permitted by applicable law. Elevations and landscaping are artists' conceptions only. Actual construction documents take precedence over artwork. Similar photos shown are for representative purposes only. Details subject to change without notification. See Community Sales Manager for details.

Available Communities



Hawk Valley Estates

200 West Valley Rd
Denver, PA 17517

1/2 Acre Homesites

Single Family Homes Starting at
\$574,000

3-5 Bed 2.5-3.5 Bath 2180+ Ft²



Mountain View Estates

114 Blue Mountain Blvd
Carlisle, PA 17013

Mountain Views and Generous
Homesites

Single Family Homes Starting at
\$470,400

2-5 Bed 2-3 Bath 1829+ Ft²



Summer Layne

501 Sunset Blvd
Annville, PA 17003

Palmyra Area School District

Single Family Homes Starting at
\$532,100

3-5 Bed 2-4 Bath 2142+ Ft²



Fox Bend

250 Dahlia Circle
Lebanon, PA 17042

Generous Homesites with Scenic
Views

Single Family Homes Starting at
\$496,700

3-4 Bed 2.5-3.5 Bath 2180+ Ft²



Southgate

129 Alexandria Dr
Annville, PA 17003

Single Family Homes Starting at
\$477,600

2-4 Bed 2-3.5 Bath 1911+ Ft²