



Single Family
Benson

Available in 2 Communities



Call for Price

3 Elevations Available

3 Bedrooms

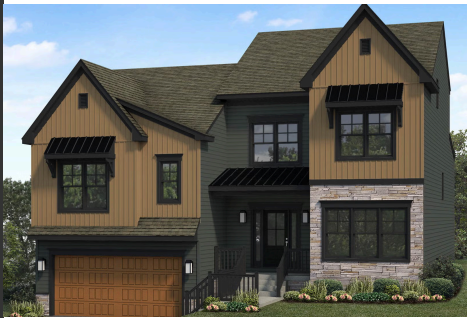
2.5 Bathrooms

2,642+ Sq. Ft.

2 Car Garage

Two-story home with an owner's suite on the main level and a 2-car, lower level garage. Upon entering the foyer, a study is quietly tucked to the side, and stairs lead to the main level featuring a spacious kitchen, dining area and great room. The upper level is complete with 2 bedrooms, a full bathroom, and a flex room that can be converted to a 4th bedroom. Optionally, keep the flex room and expand the home to add a 4th bedroom.

Available Elevations



Upgraded B Transitional



Upgraded A Traditional



Upgraded C Trademark

Document generated 4/21/26

© 2026 Landmark Builders, Inc. We enforce our intellectual property rights to the fullest extent permitted by applicable law. Elevations and landscaping are artists' conceptions only. Actual construction documents take precedence over artwork. Similar photos shown are for representative purposes only. Details subject to



FIRST FLOOR

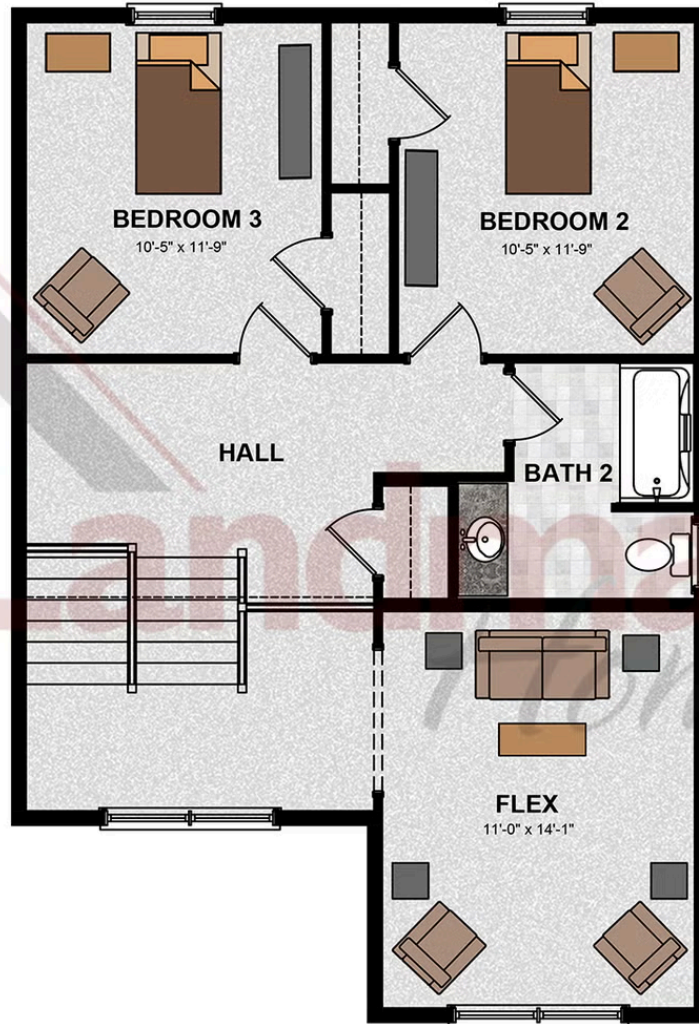


© 2025 Landmark Builders, Inc. We enforce our intellectual property rights to the fullest extent permitted by applicable law. Elevations and landscaping are artists' conceptions only. Floor plans may vary depending on elevation selected. Actual construction documents take precedence over artwork.

© 2026 Landmark Builders, Inc. We enforce our intellectual property rights to the fullest extent permitted by applicable law. Elevations and landscaping are artists' conceptions only. Actual construction documents take precedence over artwork. Similar photos shown are for representative purposes only. Details subject to change without notification. See Community Sales Manager for details.

Document generated 4/21/26

SECOND FLOOR

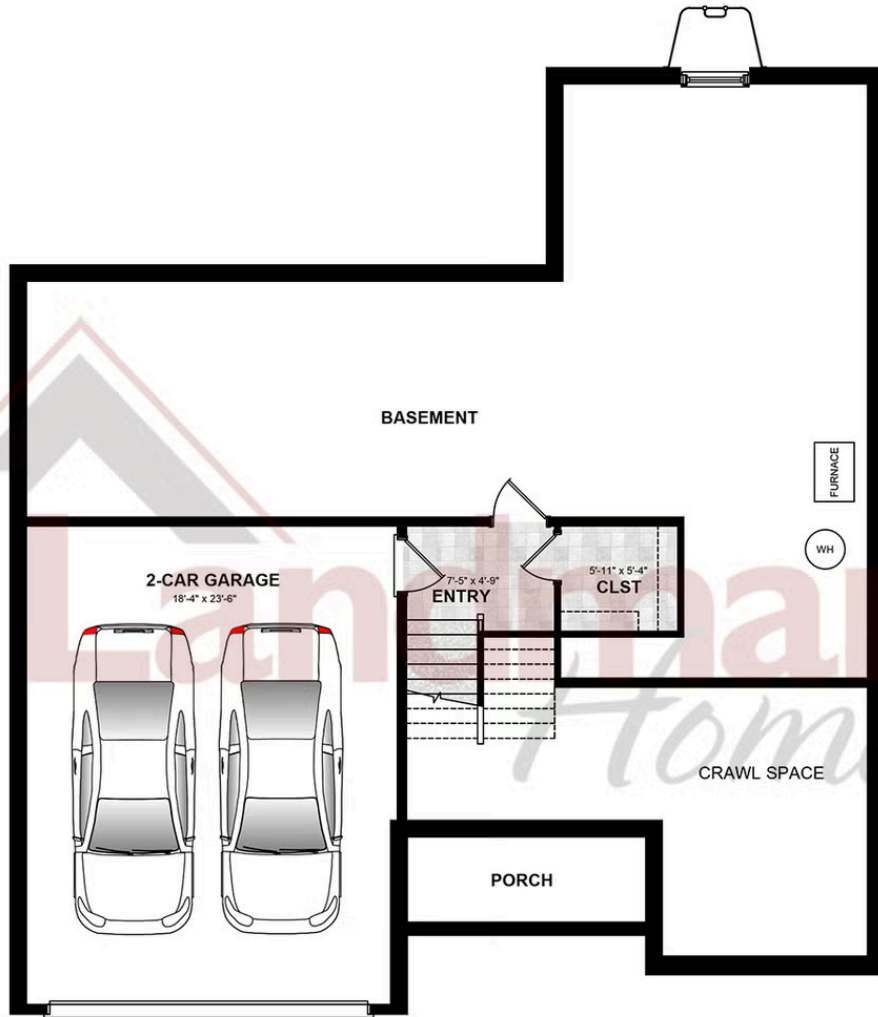


© 2025 Landmark Builders, Inc. We enforce our intellectual property rights to the fullest extent permitted by applicable law. Elevations and landscaping are artists' conceptions only. Floor plans may vary depending on elevation selected. Actual construction documents take precedence over artwork.

© 2026 Landmark Builders, Inc. We enforce our intellectual property rights to the fullest extent permitted by applicable law. Elevations and landscaping are artists' conceptions only. Actual construction documents take precedence over artwork. Similar photos shown are for representative purposes only. Details subject to change without notification. See Community Sales Manager for details.

Document generated 4/21/26

GROUND LEVEL



© 2025 Landmark Builders, Inc. We enforce our intellectual property rights to the fullest extent permitted by applicable law. Elevations and landscaping are artists' conceptions only. Floor plans may vary depending on elevation selected. Actual construction documents take precedence over artwork.

© 2026 Landmark Builders, Inc. We enforce our intellectual property rights to the fullest extent permitted by applicable law. Elevations and landscaping are artists' conceptions only. Actual construction documents take precedence over artwork. Similar photos shown are for representative purposes only. Details subject to change without notification. See Community Sales Manager for details.

Document generated 4/21/26



Single Family
Benson
 Available in 2 Communities

Available Communities



Walton Hill

23 Vista Court
 Lititz, PA 17543

Single Family Homes Starting at
\$565,565

2-4 Bed 2-2.5 Bath 1839+ Ft²



Copper Ridge Single Family

157 Copper Ridge Dr
 Newmanstown, PA 17073

Stunning Hilltop Views

Single Family Homes Starting at
\$439,100

2-4 Bed 2-2.5 Bath 1839+ Ft²

Document generated 4/21/26

© 2026 Landmark Builders, Inc. We enforce our intellectual property rights to the fullest extent permitted by applicable law. Elevations and landscaping are artists' conceptions only. Actual construction documents take precedence over artwork. Similar photos shown are for representative purposes only. Details subject to

