



Single Family
Atworth

Available in 3 Communities



Call for Price

2 Elevations Available

3 Bedrooms

2.5 Bathrooms

2,614+ Sq. Ft.

2 Car Garage

Convenient first-floor living with a charming exterior design, including a welcoming front porch. The Atworth features an open floor plan, a 2-car garage with mudroom entry, and a second-floor with 2 additional bedrooms, a bathroom and loft. The owner's suite is situated in its own corner of the house, with a private bathroom and expansive closet, while a flex room is located at the front of the home. The flex room can be used as an additional guest room, study, or other versatile space. The kitchen, dining area, and living room share an open floor plan for ease of entertaining and relaxing. Explore all the options available to make the Atworth model suit your personal needs!

Available Elevations



Upgraded B Transitional



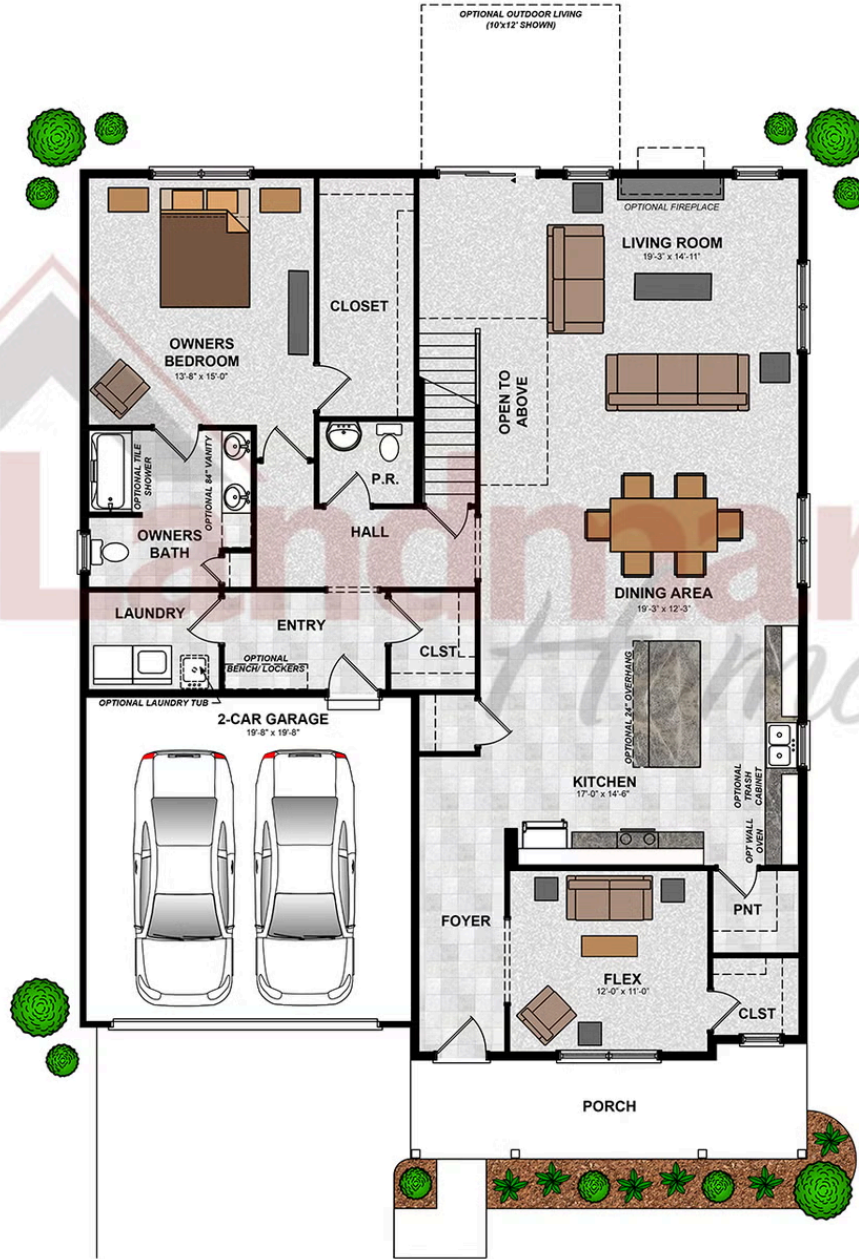
Upgraded C Trademark

Document generated 4/24/26

© 2026 Landmark Builders, Inc. We enforce our intellectual property rights to the fullest extent permitted by applicable law. Elevations and landscaping are artists' conceptions only. Actual construction documents take precedence over artwork. Similar photos shown are for representative purposes only. Details subject to



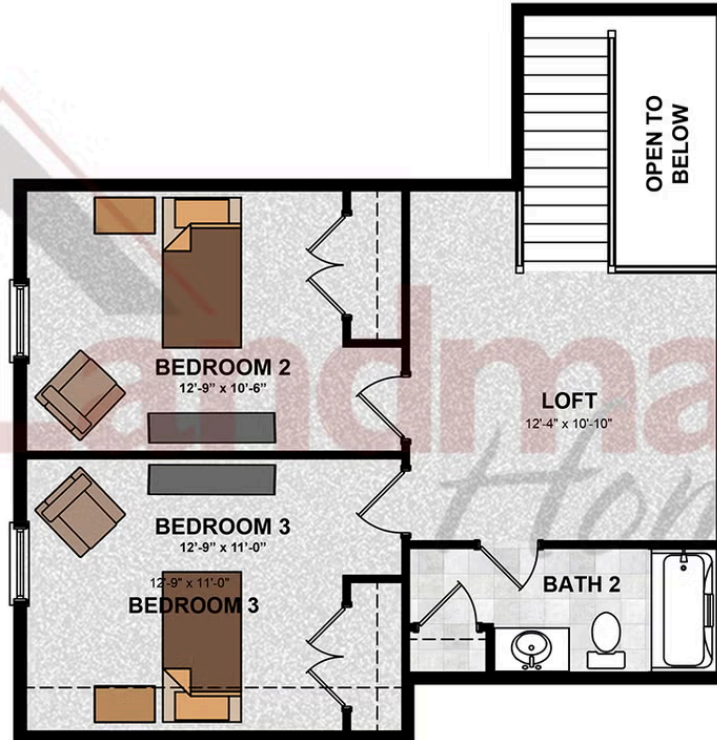
FIRST FLOOR



© 2025 Landmark Builders, Inc. We enforce our intellectual property rights to the fullest extent permitted by applicable law. Elevations and landscaping are artists' conceptions only. Floor plans may vary depending on elevation selected. Actual construction documents take precedence over artwork.

© 2026 Landmark Builders, Inc. We enforce our intellectual property rights to the fullest extent permitted by applicable law. Elevations and landscaping are artists' conceptions only. Actual construction documents take precedence over artwork. Similar photos shown are for representative purposes only. Details subject to change without notification. See Community Sales Manager for details.

SECOND FLOOR



© 2025 Landmark Builders, Inc. We enforce our intellectual property rights to the fullest extent permitted by applicable law. Elevations and landscaping are artists' conceptions only. Floor plans may vary depending on elevation selected. Actual construction documents take precedence over artwork.

© 2026 Landmark Builders, Inc. We enforce our intellectual property rights to the fullest extent permitted by applicable law. Elevations and landscaping are artists' conceptions only. Actual construction documents take precedence over artwork. Similar photos shown are for representative purposes only. Details subject to change without notification. See Community Sales Manager for details.

Document generated 4/24/26



Single Family Atworth

Available in 3 Communities

Available Communities



Sweetbriar 55+ Living

604 Lilliana Dr
Lebanon, PA 17046

Low HOA

Single Family Homes Starting at
\$403,800

2-3 Bed 2-2.5 Bath 1507+ Ft²



Winding Creek 55+ Living

1 Grand Summit Dr
Annville, PA 17003

Near Hershey, PA

Single Family Homes, Duplexes
Starting at
\$424,100

2-3 Bed 2-3 Bath 1672+ Ft²



Wyndale

108 Wyndale Dr
Ephrata, PA 17522

Walking Trails and Playground

Single Family Homes Starting at
\$512,700

2-4 Bed 2-3.5 Bath 1839+ Ft²

Document generated 4/24/26

© 2026 Landmark Builders, Inc. We enforce our intellectual property rights to the fullest extent permitted by applicable law. Elevations and landscaping are artists' conceptions only. Actual construction documents take precedence over artwork. Similar photos shown are for representative purposes only. Details subject to

