



Single Family  
**Atworth**

Available in 3 Communities



## Call for Price

2 Elevations Available

3 Bedrooms

2.5 Bathrooms

2,614+ Sq. Ft.

2 Car Garage

Convenient first-floor living with a charming exterior design, including a welcoming front porch. The Atworth features an open floor plan, a 2-car garage with mudroom entry, and a second-floor with 2 additional bedrooms, a bathroom and loft. The owner's suite is situated in its own corner of the house, with a private bathroom and expansive closet, while a flex room is located at the front of the home. The flex room can be used as an additional guest room, study, or other versatile space. The kitchen, dining area, and living room share an open floor plan for ease of entertaining and relaxing. Explore all the options available to make the Atworth model suit your personal needs!

### Available Elevations



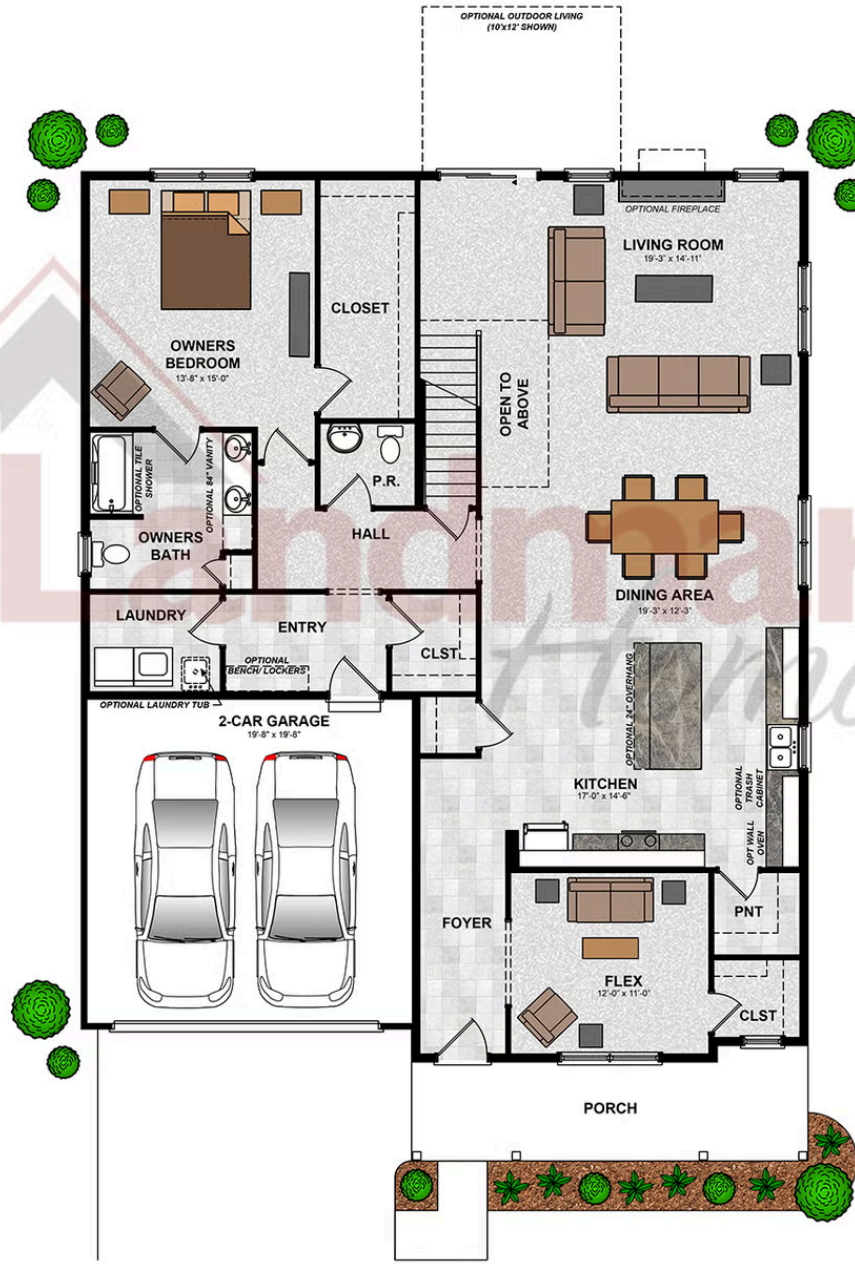
Upgraded B Transitional



Upgraded C Trademark

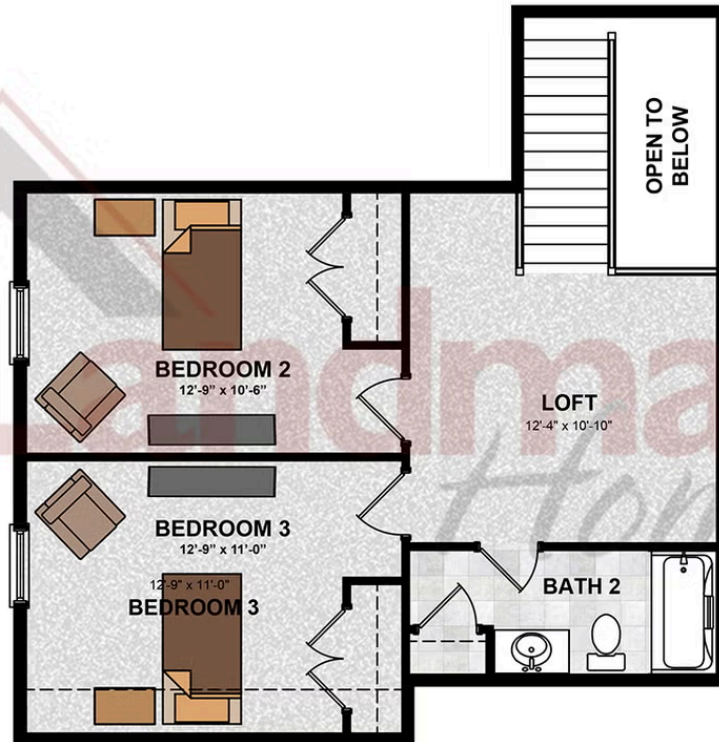


## FIRST FLOOR



© 2025 Landmark Builders, Inc. We enforce our intellectual property rights to the fullest extent permitted by applicable law. Elevations and landscaping are artists' conceptions only. Floor plans may vary depending on elevation selected. Actual construction documents take precedence over artwork.

## SECOND FLOOR



© 2025 Landmark Builders, Inc. We enforce our intellectual property rights to the fullest extent permitted by applicable law. Elevations and landscaping are artists' conceptions only. Floor plans may vary depending on elevation selected. Actual construction documents take precedence over artwork.



Single Family  
**Atworth**

Available in 3 Communities

## Available Communities



55+ Community

### Sweetbriar 55+ Living

604 Lilliana Dr  
Lebanon, PA 17046

Low HOA

Single Family Homes Starting at  
**\$410,400**

2-3 Bed 2-2.5 Bath 1507+ Ft<sup>2</sup>



55+ Community

### Winding Creek 55+ Living

1 Grand Summit Dr  
Annville, PA 17003

Near Hershey, PA

Single Family Homes, Duplexes  
Starting at  
**\$424,100**

2-3 Bed 2-3 Bath 1672+ Ft<sup>2</sup>



### Wyndale

124 Wyndale Dr  
Ephrata, PA 17522

Walking Trails and Playground

Single Family Homes Starting at  
**\$506,700**

2-4 Bed 2-3.5 Bath 1839+ Ft<sup>2</sup>

