



Single Family
Ashton

Available in 3 Communities



Call for Price

2 Elevations Available

2 Bedrooms

2 Bathrooms

2,003+ Sq. Ft.

2 Car Garage

With 2,000 square feet of single-story living, and the option to add a 2nd floor, the Ashton offers plenty of room and flexibility in a convenient design. The flex room provides versatile options – a den, study, living room, or even a 3rd bedroom. The owner's suite is situated to the rear of the home and includes a private bath and expansive closet. The kitchen, which opens to the great room, includes an island with eat-in seating and a large pantry, plus and the option for a cathedral ceiling. The dining area is conveniently situated adjacent to the kitchen and enjoys sliding glass door access to the outdoors. Options for adding a 2nd floor include a storage age, loft, bedroom and bathroom, or a combination!

Available Elevations

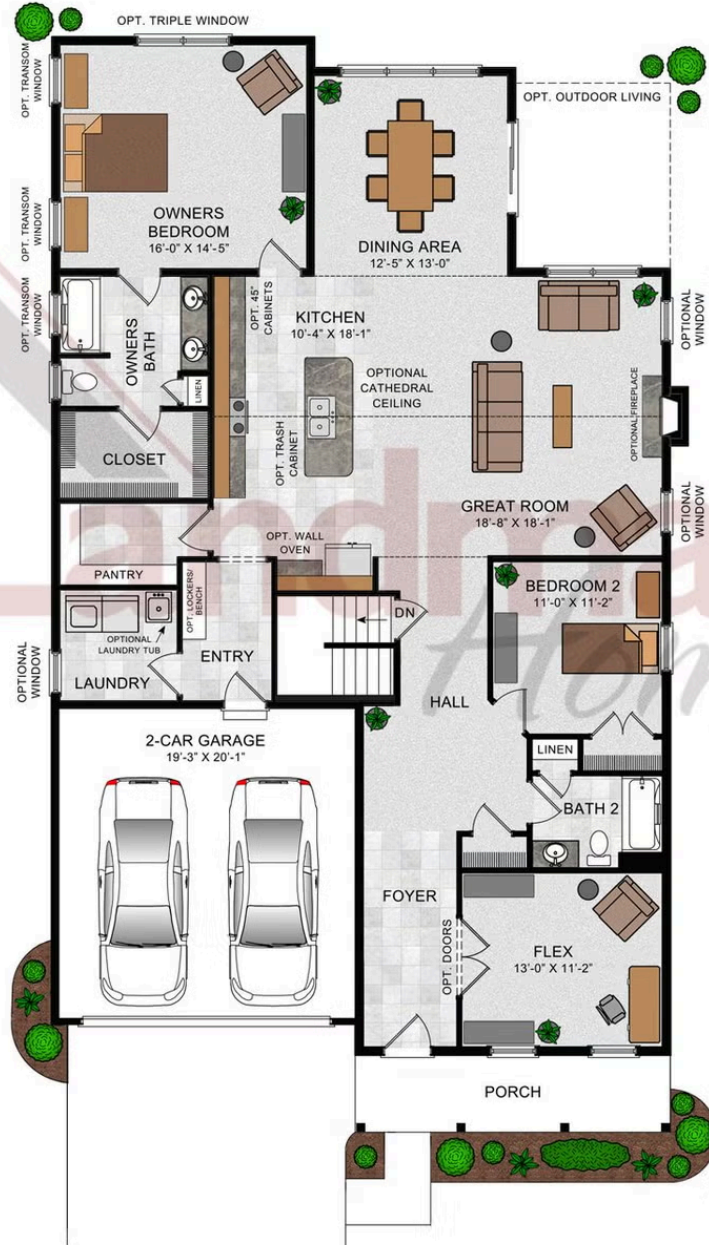


Document generated 4/24/26

© 2026 Landmark Builders, Inc. We enforce our intellectual property rights to the fullest extent permitted by applicable law. Elevations and landscaping are artists' conceptions only. Actual construction documents take precedence over artwork. Similar photos shown are for representative purposes only. Details subject to



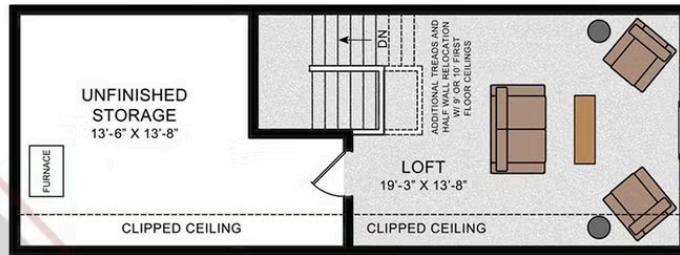
FIRST FLOOR



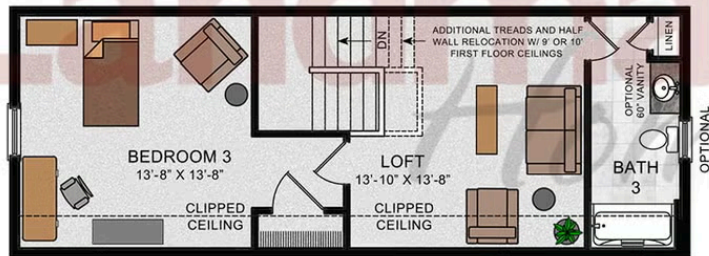
© 2025 Landmark Builders, Inc. We enforce our intellectual property rights to the fullest extent permitted by applicable law. Elevations and landscaping are artists' conceptions only. Floor plans may vary depending on elevation selected. Actual construction documents take precedence over artwork.

© 2026 Landmark Builders, Inc. We enforce our intellectual property rights to the fullest extent permitted by applicable law. Elevations and landscaping are artists' conceptions only. Actual construction documents take precedence over artwork. Similar photos shown are for representative purposes only. Details subject to change without notification. See Community Sales Manager for details.

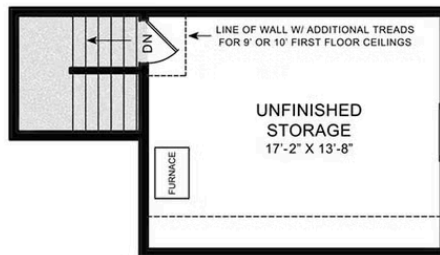
OPTIONAL SECOND FLOOR PLAN
 W/ UNFINISHED STORAGE AND LOFT



OPTIONAL SECOND FLOOR PLAN
 W/3RD BEDROOM AND BATH



OPTIONAL SECOND FLOOR PLAN
 W/UNFINISHED STORAGE



© 2025 Landmark Builders, Inc. We enforce our intellectual property rights to the fullest extent permitted by applicable law. Elevations and landscaping are artists' conceptions only. Floor plans may vary depending on elevation selected. Actual construction documents take precedence over artwork.

© 2026 Landmark Builders, Inc. We enforce our intellectual property rights to the fullest extent permitted by applicable law. Elevations and landscaping are artists' conceptions only. Actual construction documents take precedence over artwork. Similar photos shown are for representative purposes only. Details subject to change without notification. See Community Sales Manager for details.



Single Family
Ashton

Available in 3 Communities

Available Communities



55+ Community

Winding Creek 55+ Living

1 Grand Summit Dr
Annville, PA 17003

Near Hershey, PA

Single Family Homes, Duplexes
Starting at

\$424,100

2-3 Bed 2-3 Bath 1672+ Ft²



55+ Community

Inspire 55+ at Legacy Park

100 Legacy Park Dr
Mechanicsburg, PA 17055

Private Clubhouse

Single Family Homes Starting at

\$508,900

2-3 Bed 2-2.5 Bath 1839+ Ft²



Freedom Square

Copenhaffer Rd
York, PA 17404

New Homes Coming Soon to
Conewago Township

Single Family Homes Starting at

\$394,900

2-5 Bed 2-3 Bath 1647+ Ft²

Document generated 4/24/26

© 2026 Landmark Builders, Inc. We enforce our intellectual property rights to the fullest extent permitted by applicable law. Elevations and landscaping are artists' conceptions only. Actual construction documents take precedence over artwork. Similar photos shown are for representative purposes only. Details subject to

