



Single Family
Answorth

Available in 1 Community



Call for Price

3 Elevations Available

3 Bedrooms

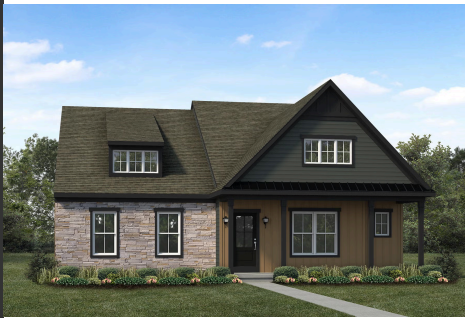
2.5 Bathrooms

2,500+ Sq. Ft.

2 Car Garage

Convenient first-floor living with a charming exterior design, including a welcoming front porch. The Answorth features an open floor plan, a 2-car, alley load garage with mudroom entry, and a second-floor with loft space and 2 additional bedrooms and full bathroom. The owner's suite is situated in its own corner of the house, with a private bathroom and expansive closet. The kitchen, dining room, and living room share an open floor plan for ease of entertaining and relaxing. Explore all the options available to make the Answorth model suit your personal needs!

Available Elevations



Upgraded B Transitional



Upgraded A Traditional



Upgraded C Trademark

Document generated 4/24/26

© 2026 Landmark Builders, Inc. We enforce our intellectual property rights to the fullest extent permitted by applicable law. Elevations and landscaping are artists' conceptions only. Actual construction documents take precedence over artwork. Similar photos shown are for representative purposes only. Details subject to

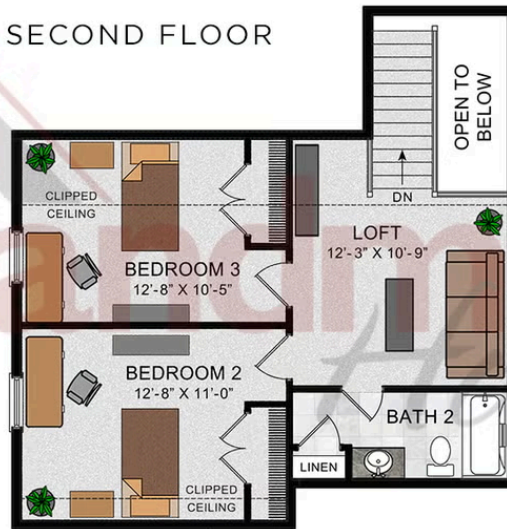




© 2022 Landmark Builders, Inc. We enforce our intellectual property rights to the fullest extent permitted by applicable law. Elevations and landscaping are artists' conceptions only. Floor plans may vary depending on elevation selected. Actual construction documents take precedence over artwork.

© 2026 Landmark Builders, Inc. We enforce our intellectual property rights to the fullest extent permitted by applicable law. Elevations and landscaping are artists' conceptions only. Actual construction documents take precedence over artwork. Similar photos shown are for representative purposes only. Details subject to change without notification. See Community Sales Manager for details.

SECOND FLOOR



© 2023 Landmark Builders, Inc. We enforce our intellectual property rights to the fullest extent permitted by applicable law. Elevations and landscaping are artists' conceptions only. Floor plans may vary depending on elevation selected. Actual construction documents take precedence over artwork.

© 2026 Landmark Builders, Inc. We enforce our intellectual property rights to the fullest extent permitted by applicable law. Elevations and landscaping are artists' conceptions only. Actual construction documents take precedence over artwork. Similar photos shown are for representative purposes only. Details subject to change without notification. See Community Sales Manager for details.



Single Family
Answorth

Available in 1 Community

Available Communities



Inspire 55+ at Legacy Park

100 Legacy Park Dr
Mechanicsburg, PA 17055

Private Clubhouse

Single Family Homes Starting at
\$508,900

2-3 Bed 2-2.5 Bath 1839+ Ft²

Document generated 4/24/26

© 2026 Landmark Builders, Inc. We enforce our intellectual property rights to the fullest extent permitted by applicable law. Elevations and landscaping are artists' conceptions only. Actual construction documents take precedence over artwork. Similar photos shown are for representative purposes only. Details subject to

