



Single Family  
**Amberbrook**  
Available in 6 Communities



# Call for Price

- 3 Elevations Available
- 4 Bedrooms
- 2.5 Bathrooms
- 3,004+ Sq. Ft.
- 2 Car Garage

Two-story home with over 3,000 sq feet, 4 bedrooms and 2.5 baths, and a 2-car garage. A 5th bedroom and 3rd full bathroom can be optionally built in place of the study on the first floor. A two-story great room shares an open plan with the dining area and kitchen. The 2nd floor includes a spacious loft area and laundry room.

## Available Elevations



Upgraded B Transitional



Upgraded A Traditional



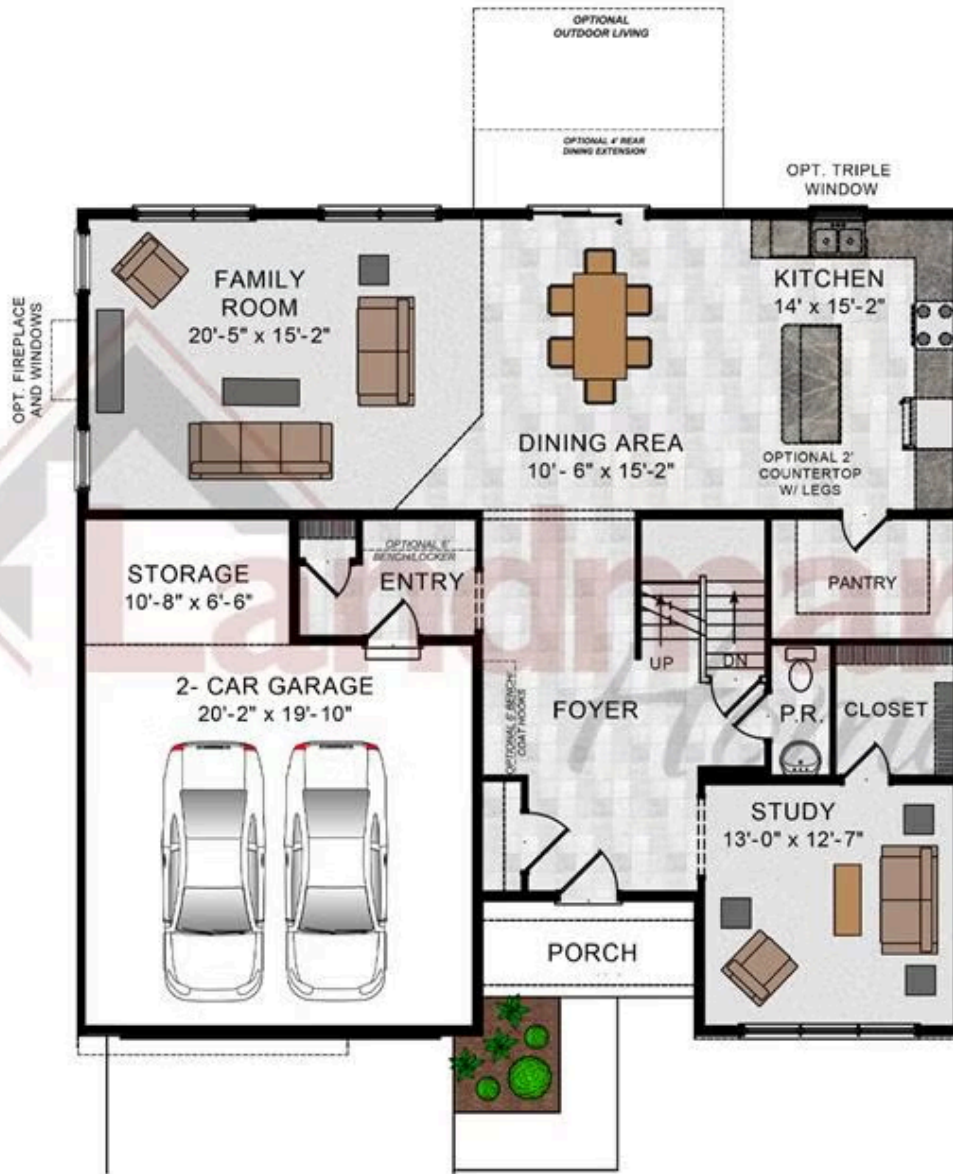
Upgraded C Trademark

Document generated 4/23/26

© 2026 Landmark Builders, Inc. We enforce our intellectual property rights to the fullest extent permitted by applicable law. Elevations and landscaping are artists' conceptions only. Actual construction documents take precedence over artwork. Similar photos shown are for representative purposes only. Details subject to



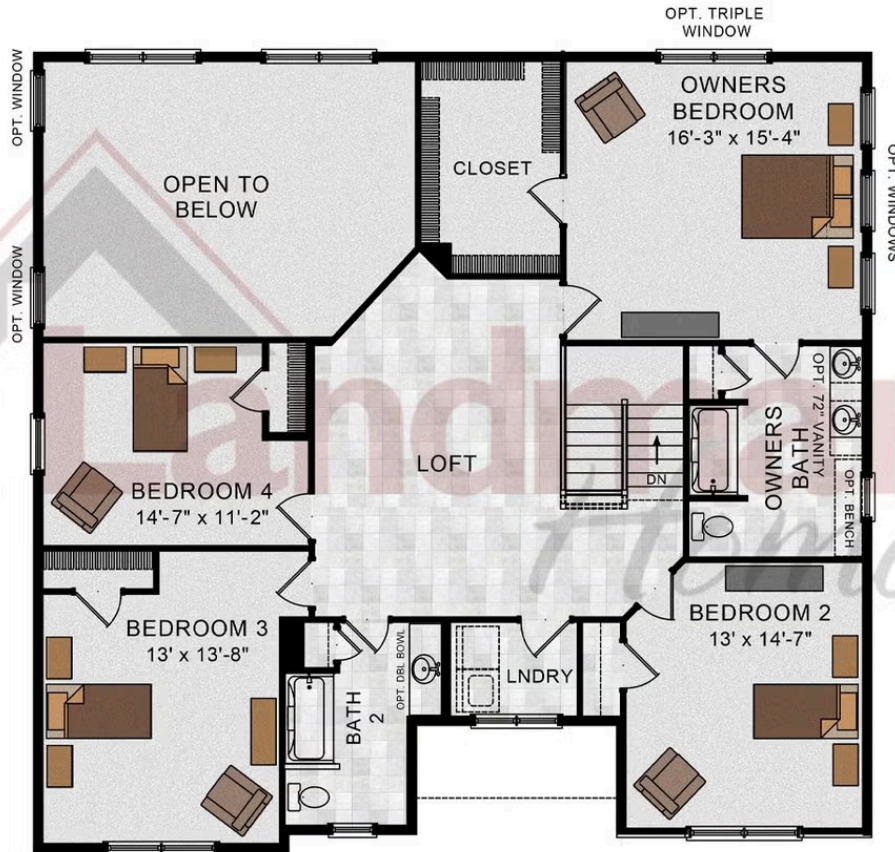
FIRST FLOOR



© 2026 Landmark Builders, Inc. We enforce our intellectual property rights to the fullest extent permitted by applicable law. Elevations and landscaping are artists' conceptions only. Floor plans may vary depending on elevation selected. Actual construction documents take precedence over artwork.

© 2026 Landmark Builders, Inc. We enforce our intellectual property rights to the fullest extent permitted by applicable law. Elevations and landscaping are artists' conceptions only. Actual construction documents take precedence over artwork. Similar photos shown are for representative purposes only. Details subject to change without notification. See Community Sales Manager for details.

SECOND FLOOR

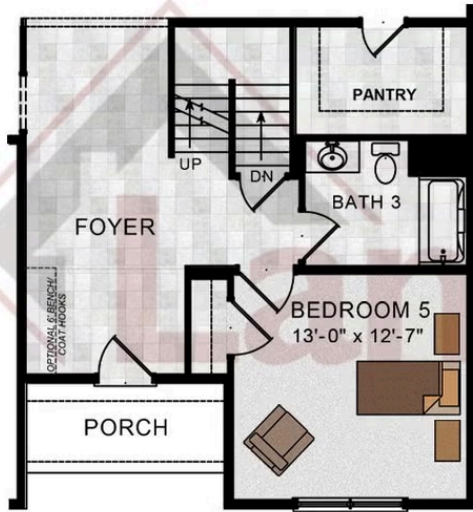


© 2024 Landmark Builders, Inc. We enforce our intellectual property rights to the fullest extent permitted by applicable law. Elevations and landscaping are artists' conceptions only. Floor plans may vary depending on elevation selected. Actual construction documents take precedence over artwork.

© 2026 Landmark Builders, Inc. We enforce our intellectual property rights to the fullest extent permitted by applicable law. Elevations and landscaping are artists' conceptions only. Actual construction documents take precedence over artwork. Similar photos shown are for representative purposes only. Details subject to change without notification. See Community Sales Manager for details.

Document generated 4/23/26

OPTIONAL FIRST FLOOR  
 BEDROOM 5



OPTIONAL FIRST FLOOR  
 PREP KITCHEN



© 2024 Landmark Builders, Inc. We enforce our intellectual property rights to the fullest extent permitted by applicable law. Elevations and landscaping are artists' conceptions only. Floor plans may vary depending on elevation selected. Actual construction documents take precedence over artwork.

© 2026 Landmark Builders, Inc. We enforce our intellectual property rights to the fullest extent permitted by applicable law. Elevations and landscaping are artists' conceptions only. Actual construction documents take precedence over artwork. Similar photos shown are for representative purposes only. Details subject to change without notification. See Community Sales Manager for details.

Document generated 4/23/26



Single Family  
**Amberbrook**  
 Available in 6 Communities

## Available Communities



### Mountain View Estates

114 Blue Mountain Blvd  
 Carlisle, PA 17013

Mountain Views and Generous Homesites

Single Family Homes Starting at  
**\$470,400**

2-5 Bed 2-3 Bath 1829+ Ft<sup>2</sup>



### Summer Layne

501 Sunset Blvd  
 Annville, PA 17003

Palmyra Area School District

Single Family Homes Starting at  
**\$532,100**

3-5 Bed 2-4 Bath 2142+ Ft<sup>2</sup>



### Wyndale

108 Wyndale Dr  
 Ephrata, PA 17522

Walking Trails and Playground

Single Family Homes Starting at  
**\$512,700**

2-4 Bed 2-3.5 Bath 1839+ Ft<sup>2</sup>



### Briar Ridge

834 Kimmerlings Rd  
 Lebanon, PA 17046

1/2 Acre Homesites

Single Family Homes Starting at  
**\$441,600**

2-4 Bed 2-2.5 Bath 1839+ Ft<sup>2</sup>



### Southgate

129 Alexandria Dr  
 Annville, PA 17003

Single Family Homes Starting at  
**\$477,600**

2-4 Bed 2-3.5 Bath 1911+ Ft<sup>2</sup>



### Freedom Square

Copenhaffer Rd  
 York, PA 17404

New Homes Coming Soon to  
 Conewago Township

Single Family Homes Starting at  
**\$394,900**

2-5 Bed 2-3 Bath 1647+ Ft<sup>2</sup>

Document generated 4/23/26

© 2026 Landmark Builders, Inc. We enforce our intellectual property rights to the fullest extent permitted by applicable law. Elevations and landscaping are artists' conceptions only. Actual construction documents take precedence over artwork. Similar photos shown are for representative purposes only. Details subject to

