



Single Family  
**Alaina**

Available in 1 Community



## Call for Price

3 Elevations Available

3 Bedrooms

2.5 Bathrooms

2,031+ Sq. Ft.

1 Car Garage

This thoughtfully designed two-story home blends modern convenience with comfortable everyday living. From the moment you step onto the welcoming front porch, you're greeted by a bright foyer that opens into a spacious living room—perfect for relaxing or entertaining. The heart of the home is the open-concept kitchen and dining area, featuring a large island and pantry, and seamless flow for gatherings. Just off the kitchen, an optional outdoor living space extends your entertainment area even further. A convenient powder room and a 1-car garage complete the first floor. Upstairs, the private owner's suite offers a peaceful retreat with a generous bedroom, expansive closet, and a well-appointed en-suite bath. Two additional bedrooms provide flexibility for family, guests, or a home office, and share a full hall bath. A centrally located laundry area adds everyday convenience. Optionally, add a finished loft or 4th bedroom for added space and room to grow.

### Available Elevations

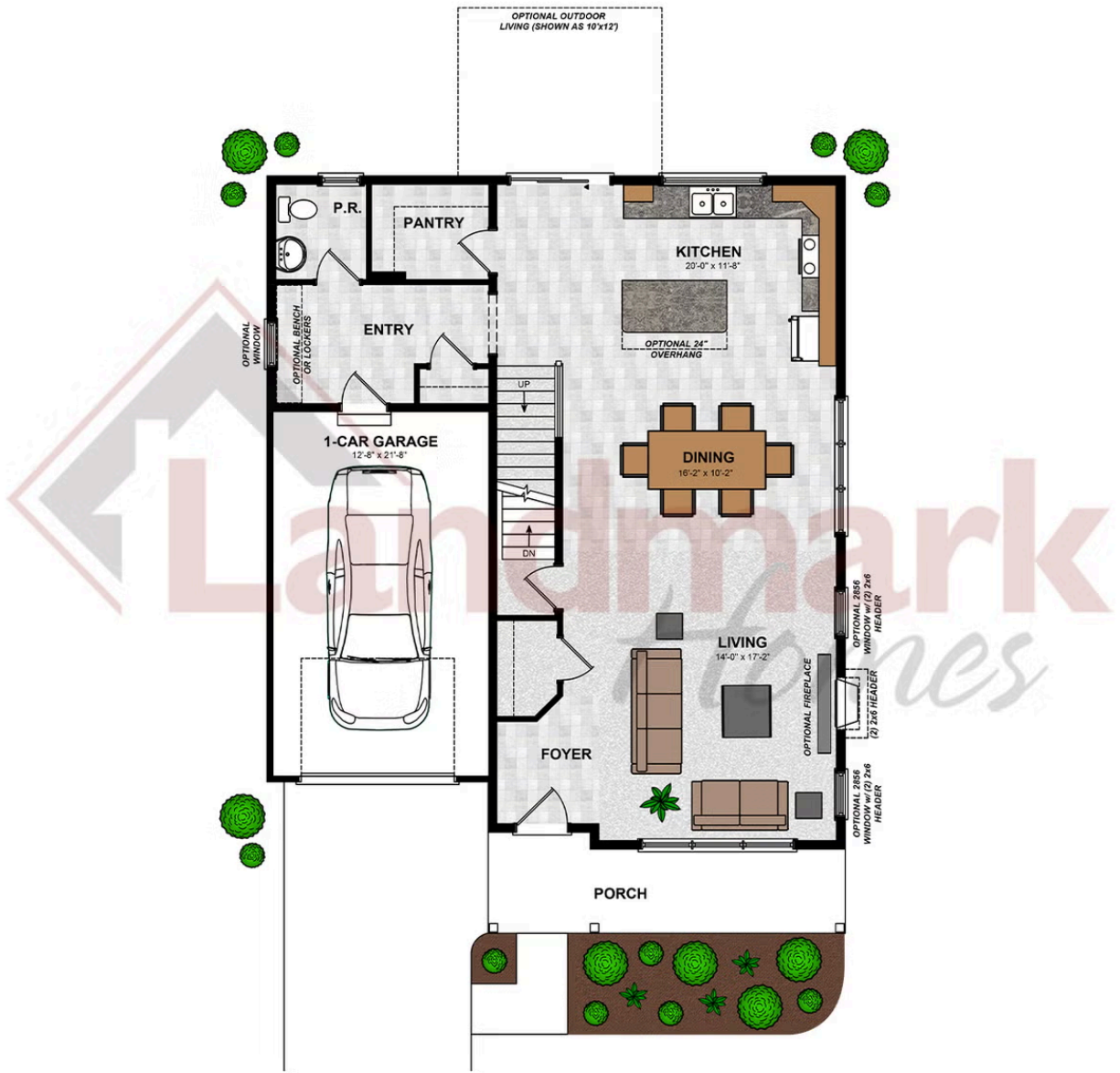


Document generated 5/7/26

© 2026 Landmark Builders, Inc. We enforce our intellectual property rights to the fullest extent permitted by applicable law. Elevations and landscaping are artists' conceptions only. Actual construction documents take precedence over artwork. Similar photos shown are for representative purposes only. Details subject to



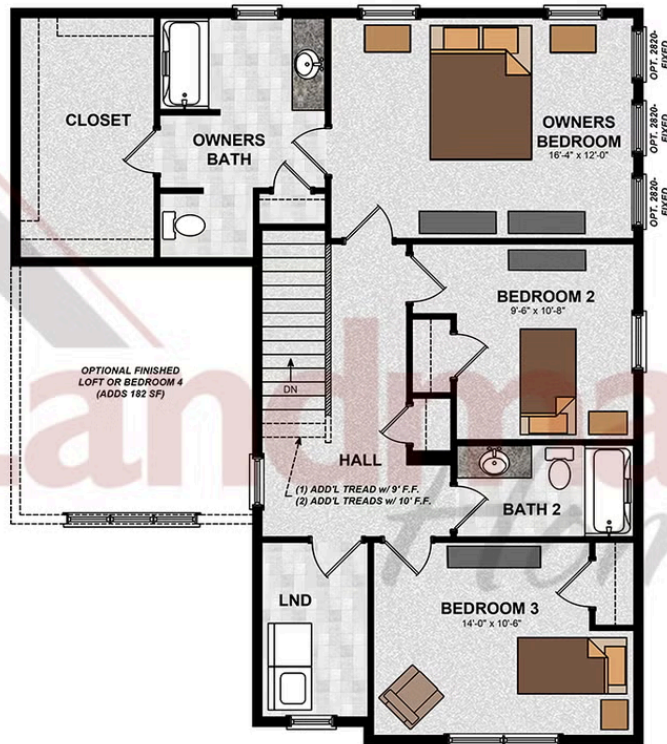
FIRST FLOOR



© 2026 Landmark Builders, Inc. We enforce our intellectual property rights to the fullest extent permitted by applicable law. Elevations and landscaping are artists' conceptions only. Floor plans may vary depending on elevation selected. Actual construction documents take precedence over artwork.

© 2026 Landmark Builders, Inc. We enforce our intellectual property rights to the fullest extent permitted by applicable law. Elevations and landscaping are artists' conceptions only. Actual construction documents take precedence over artwork. Similar photos shown are for representative purposes only. Details subject to change without notification. See Community Sales Manager for details.

SECOND FLOOR



© 2026 Landmark Builders, Inc. We enforce our intellectual property rights to the fullest extent permitted by applicable law. Elevations and landscaping are artists' conceptions only. Floor plans may vary depending on elevation selected. Actual construction documents take precedence over artwork.

© 2026 Landmark Builders, Inc. We enforce our intellectual property rights to the fullest extent permitted by applicable law. Elevations and landscaping are artists' conceptions only. Actual construction documents take precedence over artwork. Similar photos shown are for representative purposes only. Details subject to change without notification. See Community Sales Manager for details.

Document generated 5/7/26



Single Family  
**Alaina**  
Available in 1 Community

## Available Communities



### Cardinal Court

3917 Tunnel Hill Road  
York, PA 17408

New Homes Coming Soon in York  
County, PA

Single Family Homes

3-4 Bed   2.5 Bath   1588+ Ft<sup>2</sup>

Document generated 5/7/26

© 2026 Landmark Builders, Inc. We enforce our intellectual property rights to the fullest extent permitted by applicable law. Elevations and landscaping are artists' conceptions only. Actual construction documents take precedence over artwork. Similar photos shown are for representative purposes only. Details subject to

